



**Australian  
Bureau of  
Statistics**

**September  
Quarter 1994**

**Tourist  
Accommodation  
Queensland**

**Catalogue No. 8635.3**



## TOURIST ACCOMMODATION, QUEENSLAND, SEPTEMBER QUARTER 1994

\*\*\*\*\*

### MAIN FEATURES

SEPTEMBER QUARTER 1994  
COMPARED WITH  
SEPTEMBER QUARTER 1993

#### HOTELS, MOTELS AND GUEST HOUSES

- Rooms available increased by 0.9 per cent from 40,024 to 40,382 and bed spaces increased by 1.2 per cent to 122,886.
- Room nights occupied increased by 5.6 per cent from 2,419,393 to 2,555,450 overall with licensed hotels recording an increase of 9.3 per cent and motels and guest houses an increase of 2.7 per cent.
- The room occupancy rate overall rose from 65.7 per cent to 68.9 per cent, with Cairns City, Brisbane City and Gold Coast City recording 85.0 per cent, 76.9 per cent and 71.3 per cent, respectively. For five star rated establishments, the room occupancy rate was 75.8 per cent compared with 75.3 per cent for four star rated establishments and 70.3 per cent for three star rated establishments.
- Guest nights increased by 6.5 per cent from 4,525,418 to 4,820,368 and the bed occupancy rate increased from 40.5 per cent to 42.7 per cent.
- Guest arrivals increased by 8.1 per cent from 1,888,399 to 2,040,604 while the average length of stay was unchanged at 2.4 days. For five star rated establishments, average length of stay decreased from 3.4 days to 2.9 days and, for four star rated establishments, decreased from 3.1 days to 2.9 days.
- Takings from accommodation increased by 13.8 per cent from \$195.5m to \$222.6m while average takings per room night occupied increased from \$81 to \$87.

#### HOLIDAY FLATS, UNITS AND HOUSES

- The number of units, etc. available for short-term letting increased by 7.5 per cent from 16,214 to 17,425 while unit nights occupied increased by 7.1 per cent from 1,062,658 to 1,137,951.
- The unit occupancy rate decreased marginally from 71.3 per cent to 71.2 per cent.
- Unit lettings increased by 9.0 per cent from 149,742 to 163,216 but average length of stay decreased from 7.1 days to 7.0 days.
- Accommodation takings increased by 15.9 per cent from \$57.5m to \$66.6m and the average takings per unit night occupied increased from \$54 to \$59.

#### CARAVAN PARKS

- Capacity available decreased by 2.1 per cent from 55,765 to 54,569 powered and unpowered sites and cabins, etc. while site nights occupied decreased by 2.0 per cent from 2,740,434 to 2,686,130.
- The site occupancy rate was unchanged at 53.5 per cent.
- Long-term residents occupied 16,698 sites, etc. (30.6 per cent), while 1,363 sites (2.5 per cent) were permanently reserved but only casually occupied by their tenants and an average of 11,136 sites (20.4 per cent) were occupied by other short-term guests.
- Takings from accommodation rose by 3.1 per cent from \$28.5m to \$29.4m.

#### VISITOR HOSTELS

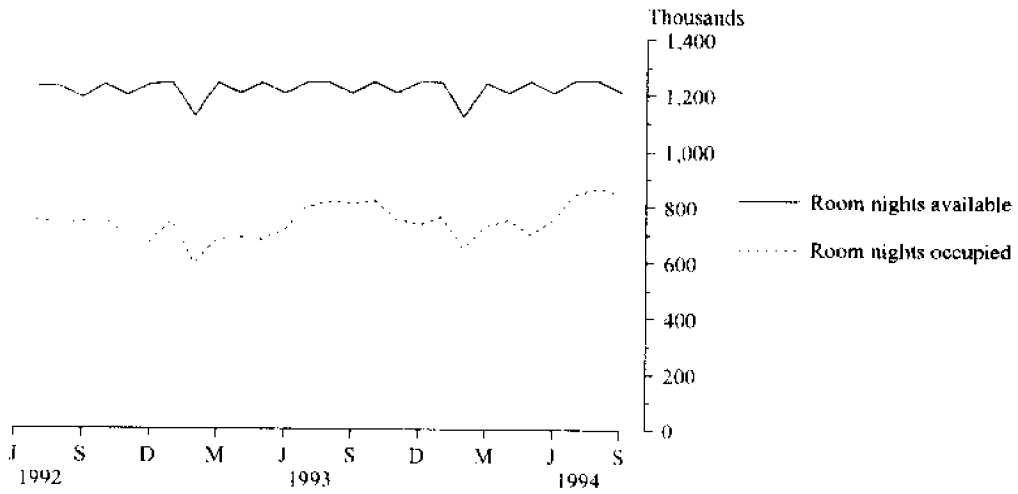
- Bed spaces available decreased by 2.6 per cent from 8,000 to 7,791 while guest nights sold decreased by 4.9 per cent from 400,057 to 380,506.
- The bed occupancy rate decreased from 54.4 per cent to 53.1 per cent.
- Guest arrivals decreased by 11.2 per cent from 156,127 to 138,586 while average length of stay increased from 2.6 days to 2.7 days.
- Accommodation takings increased by 0.3 per cent from \$4.5m to \$4.6m with average takings per guest night at \$12.

### INQUIRIES

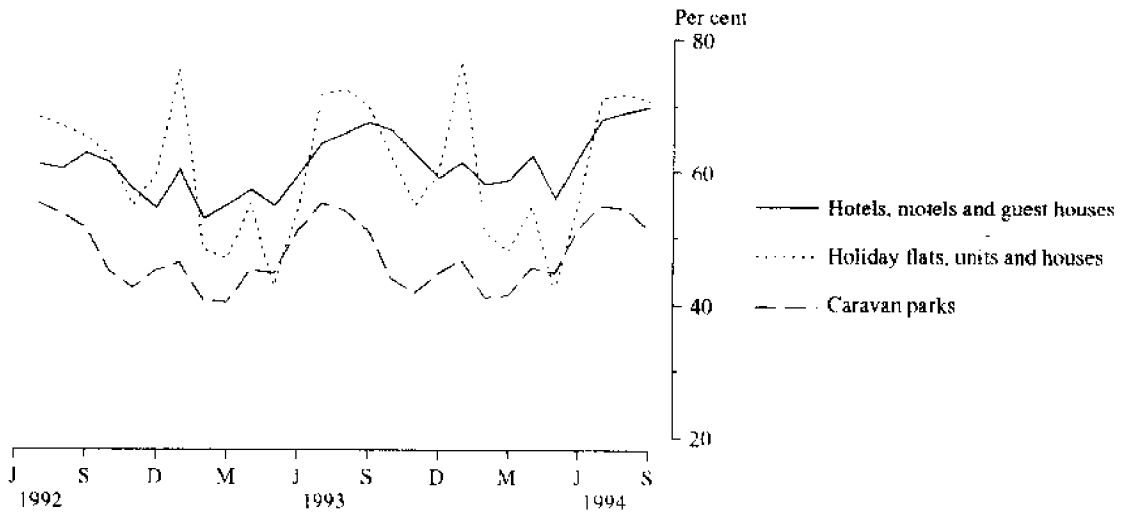
- *for further information about statistics in this publication and the availability of related unpublished statistics, contact Vern Wills on 008 077285 or any ABS office.*
- *for information about other ABS statistics and services, refer to the back page of this publication.*

\*\*\*\*\*

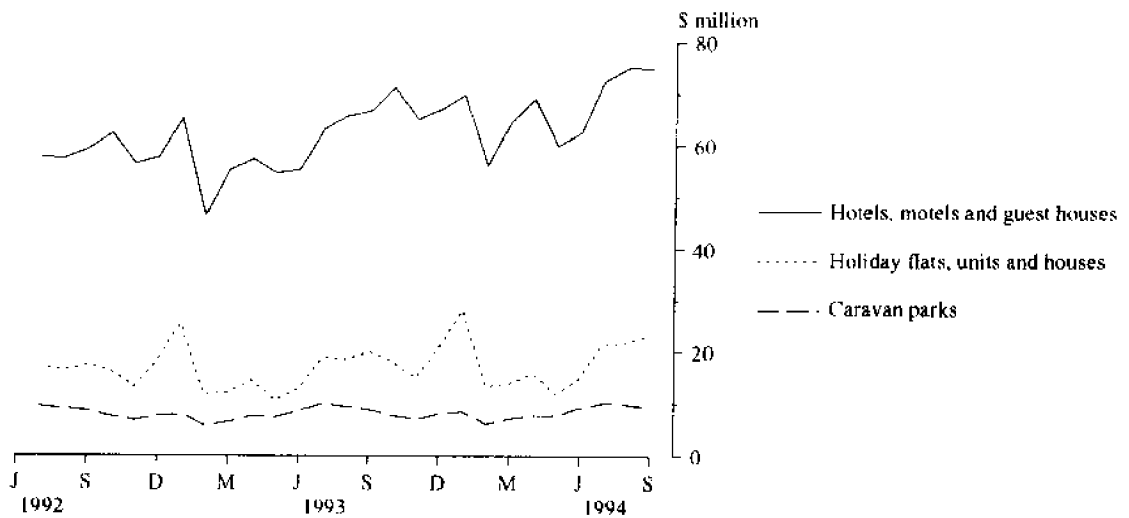
**MONTHLY ROOM NIGHTS AVAILABLE AND OCCUPIED:  
HOTELS, MOTELS AND GUEST HOUSES,  
QUEENSLAND**



**MONTHLY OCCUPANCY RATES,  
QUEENSLAND**



**MONTHLY TAKINGS FROM ACCOMMODATION,  
QUEENSLAND**



## CONTENTS

<i>Table</i>	<i>Page</i>
-	Main features <span style="float: right;">1</span>
"	Diagrams <span style="float: right;">2</span>
1	Summary of hotels, motels and guest houses with facilities, Queensland <span style="float: right;">4</span>
2	Summary of caravan parks, Queensland <span style="float: right;">5</span>
3	Summary of holiday flats, units and houses, Queensland <span style="float: right;">6</span>
4	Summary of visitor hostels, Queensland <span style="float: right;">6</span>
5	Hotels, motels and guest houses with facilities by star grading, Queensland <span style="float: right;">7</span>
6	Hotels, motels and guest houses with facilities by statistical division, Queensland <span style="float: right;">8</span>
7	Hotels, motels and guest houses with facilities: Statistical divisions and selected subdivisions and statistical local areas, Queensland <span style="float: right;">12</span>
8	Holiday flats, units and houses by statistical division, Queensland <span style="float: right;">16</span>
9	Holiday flats, units and houses: Statistical divisions and selected subdivisions and statistical local areas, Queensland <span style="float: right;">18</span>
10	Caravan parks by statistical division, Queensland <span style="float: right;">20</span>
11	Caravan parks: Statistical divisions and selected subdivisions and statistical local areas, Queensland <span style="float: right;">24</span>
12	Visitor hostels by statistical division, Queensland <span style="float: right;">28</span>
"	Explanatory Notes <span style="float: right;">29</span>
"	Time series statistics available <span style="float: right;">33</span>
"	Reference maps -- statistical divisions and local government areas of Queensland <span style="float: right;">35</span>

TABLE 1 — SUMMARY OF HOTELS, MOTELS AND GUEST HOUSES WITH FACILITIES, QUEENSLAND (a)

Particulars	Unit	Quarter ended				Year ended			
		June 1993	September 1993	December 1993	March 1994	June 1994	September 1994	September 1993	September 1994
<b>LICENSED HOTELS WITH FACILITIES</b>									
Establishments	No.	279	276	262	258	265	264	..	..
Guest rooms	No.	17,929	17,968	17,917	17,914	18,028	18,194	..	..
Bed spaces	No.	53,158	53,271	53,013	53,344	53,940	54,602	..	..
Employment (persons)	No.	18,835	20,346	21,104	20,456	20,409	21,133	..	..
Room nights occupied	No.	941,762	1,066,265	1,122,871	1,028,503	1,016,954	1,165,651	3,932,162	4,333,979
Room occupancy rate	per cent	57.7	64.5	68.1	63.8	62.0	69.9	60.4	66.0
Guest nights	No.	1,697,025	1,967,630	2,086,779	1,943,909	1,869,013	2,204,653	7,211,088	8,104,354
Bed occupancy rate	per cent	35.1	40.1	42.8	40.5	38.1	44.0	37.5	41.4
Guest arrivals	No.	581,526	649,671	730,049	686,634	664,482	770,122	2,424,676	2,851,287
Average length of stay	days	2.9	3.0	2.9	2.8	2.8	2.9	3.0	2.8
Takings from accommodation	\$'000	100,195	113,608	129,142	119,446	117,679	134,644	424,283	500,911
<b>MOTELS AND GUEST HOUSES WITH FACILITIES</b>									
Establishments	No.	842	840	836	835	836	831	..	..
Guest rooms	No.	22,036	22,056	22,208	22,148	22,183	22,188	..	..
Bed spaces	No.	68,245	68,210	68,551	68,414	68,533	68,284	..	..
Employment (persons)	No.	8,288	8,373	8,417	8,310	8,431	8,749	..	..
Room nights occupied	No.	1,134,132	1,353,128	1,187,846	1,112,294	1,184,899	1,389,799	4,680,608	4,874,838
Room occupancy rate	per cent	56.6	66.8	58.2	55.9	58.7	68.1	58.1	60.3
Guest nights	No.	2,102,229	2,557,788	2,231,183	2,123,096	2,180,046	2,615,715	8,775,646	9,150,040
Bed occupancy rate	per cent	33.9	40.8	35.4	34.5	35.0	41.6	35.1	36.7
Guest arrivals	No.	1,037,764	1,238,728	1,066,888	990,513	1,068,182	1,270,482	4,192,252	4,396,065
Average length of stay	days	2.0	2.1	2.1	2.1	2.0	2.1	2.1	2.1
Takings from accommodation	\$'000	67,136	81,890	74,229	71,158	72,797	87,914	282,165	306,099
<b>TOTAL HOTELS, MOTELS AND GUEST HOUSES WITH FACILITIES</b>									
Establishments	No.	1,121	1,116	1,098	1,093	1,101	1,095	..	..
Guest rooms	No.	39,965	40,024	40,125	40,062	40,211	40,382	..	..
Bed spaces	No.	121,403	121,481	121,564	121,758	122,473	122,886	..	..
Employment (persons)	No.	27,123	28,719	29,521	28,766	28,840	29,882	..	..
Room nights occupied	No.	2,075,894	2,419,393	2,310,717	2,140,797	2,201,853	2,555,450	8,612,770	9,208,817
Room occupancy rate	per cent	57.1	65.7	62.6	59.4	60.2	68.9	59.2	62.8
Guest nights	No.	3,799,254	4,525,418	4,317,962	4,067,005	4,049,059	4,820,368	15,986,734	17,254,394
Bed occupancy rate	per cent	34.4	40.5	38.6	37.2	36.3	42.7	36.2	38.7
Guest arrivals	No.	1,619,290	1,888,399	1,796,937	1,677,147	1,732,664	2,040,604	6,616,928	7,247,352
Average length of stay	days	2.3	2.4	2.4	2.4	2.3	2.4	2.4	2.4
Takings from accommodation	\$'000	167,331	195,498	203,370	190,605	190,476	222,559	706,448	807,010

(a) From December quarter 1993, establishments with fewer than 5 rooms have been formally excluded from the scope of this collection. See Explanatory Note 2 (page 29).

TABLE 2 — SUMMARY OF CARAVAN PARKS, QUEENSLAND

Particulars	Unit	Quarter ended				Year ended		September 1993	September 1994
		June 1993	September 1993	December 1993	March 1994	June 1994	September 1994		
<b>SHORT-TERM CARAVAN PARKS</b>									
Establishments	No.	226	226	231	232	238	239	..	..
Capacity									
On-site vans	No.	1,128	1,094	1,080	1,062	1,065	1,053	..	..
Other powered sites	No.	10,636	10,623	10,792	10,831	11,040	10,738	..	..
Unpowered sites	No.	8,478	8,304	8,390	8,261	8,268	7,895	..	..
Cabins, etc.	No.	1,158	1,204	1,207	1,243	1,266	1,303	..	..
<i>Total capacity</i>	<i>No.</i>	<i>21,400</i>	<i>21,225</i>	<i>21,469</i>	<i>21,397</i>	<i>21,639</i>	<i>20,989</i>	..	..
Sites occupied by long-term guests	No.	1,897	1,789	1,752	1,769	1,821	1,812	..	..
Other sites permanently reserved	No.	611	691	684	675	755	850	..	..
Employment (persons)	No.	777	794	811	806	866	896	..	..
Site nights occupied	No.	634,893	869,992	565,353	527,427	664,321	878,827	2,544,129	2,635,928
Site occupancy rate	per cent	32.7	44.6	28.7	27.5	33.9	45.6	32.8	33.9
Takings from accommodation	\$'000	7,485	10,295	6,953	6,285	7,971	11,012	29,744	32,220
<b>LONG-TERM CARAVAN PARKS</b>									
Establishments	No.	400	400	398	397	393	393	..	..
Capacity									
On-site vans	No.	4,604	4,736	4,728	4,763	4,775	4,745	..	..
Other powered sites	No.	21,866	21,991	21,835	21,424	21,305	21,436	..	..
Unpowered sites	No.	5,386	5,546	5,413	5,162	5,109	5,040	..	..
Cabins, etc.	No.	2,230	2,267	2,237	2,308	2,331	2,359	..	..
<i>Total capacity</i>	<i>No.</i>	<i>34,086</i>	<i>34,540</i>	<i>34,213</i>	<i>33,657</i>	<i>33,520</i>	<i>33,580</i>	..	..
Sites occupied by long-term guests	No.	15,148	15,348	14,687	14,659	14,923	14,886	..	..
Other sites permanently reserved	No.	630	552	502	497	456	513	..	..
Employment (persons)	No.	1,412	1,392	1,372	1,458	1,380	1,373	..	..
Site nights occupied	No.	1,730,416	1,870,442	1,659,131	1,607,555	1,704,073	1,807,303	6,905,956	6,778,062
Site occupancy rate	per cent	55.8	58.9	52.7	53.1	55.9	58.5	55.5	55.0
Takings from accommodation	\$'000	16,235	18,219	15,979	15,594	16,655	18,393	64,859	66,620
<b>TOTAL CARAVAN PARKS</b>									
Establishments	No.	626	626	629	629	631	632	..	..
Capacity									
On-site vans	No.	5,732	5,830	5,808	5,825	5,840	5,798	..	..
Other powered sites	No.	32,502	32,614	32,627	32,255	32,345	32,174	..	..
Unpowered sites	No.	13,864	13,850	13,803	13,423	13,377	12,935	..	..
Cabins, etc.	No.	3,388	3,471	3,444	3,551	3,597	3,662	..	..
<i>Total capacity</i>	<i>No.</i>	<i>55,486</i>	<i>55,765</i>	<i>55,682</i>	<i>55,054</i>	<i>55,159</i>	<i>54,569</i>	..	..
Sites occupied by long-term guests	No.	17,045	17,137	16,439	16,428	16,744	16,698	..	..
Other sites permanently reserved	No.	1,241	1,243	1,186	1,172	1,211	1,363	..	..
Employment (persons)	No.	2,189	2,186	2,183	2,264	2,246	2,269	..	..
Site nights occupied	No.	2,365,309	2,740,434	2,224,484	2,134,982	2,368,394	2,686,130	9,450,085	9,413,990
Site occupancy rate	per cent	46.9	53.5	43.4	43.1	47.3	53.5	46.7	46.8
Takings from accommodation	\$'000	23,720	28,515	22,931	21,878	24,626	29,404	94,604	98,840

TABLE 3 — SUMMARY OF HOLIDAY FLATS, UNITS AND HOUSES, QUEENSLAND

Particulars	Unit	Quarter ended				Year ended			
		June 1993	September 1993	December 1993	March 1994	June 1994	September 1994	September 1993	September 1994
Letting entities	No.	591	594	611	605	619	632	..	..
Flats, units and houses									
Single bedroom	No.	3,371	3,405	3,512	3,497	3,423	3,560	..	..
Multiple bedroom	No.	12,431	12,809	13,096	12,824	13,249	13,865	..	..
<i>Total flats, units and houses</i>	<i>No.</i>	<i>15,802</i>	<i>16,214</i>	<i>16,608</i>	<i>16,321</i>	<i>16,672</i>	<i>17,425</i>	..	..
Bed spaces	No.	63,683	65,054	66,574	65,990	67,723	70,544	..	..
Employment (persons) (a)	No.	1,961	2,031	2,160	2,125	2,185	2,325	..	..
Unit nights occupied	No.	726,634	1,062,658	901,951	862,883	767,957	1,137,951	3,452,648	3,670,742
Unit occupancy rate	per cent	50.5	71.3	59.1	58.8	50.7	71.2	59.6	60.1
Unit lettings	No.	117,300	149,742	147,452	134,177	127,802	163,216	528,117	572,647
Average length of stay	days	6.2	7.1	6.1	6.4	6.0	7.0	6.5	6.4
Takings from accommodation	\$'000	38,248	57,485	54,078	55,714	42,801	66,634	192,931	219,228

(a) Employment numbers exclude real estate agents and their employees.

TABLE 4 — SUMMARY OF VISITOR HOSTELS, QUEENSLAND

Particulars	Unit	Quarter ended				Year ended			
		June 1993	September 1993	December 1993	March 1994	June 1994	September 1994	September 1993	September 1994
Establishments	No.	115	121	118	122	116	116	..	..
Bed spaces	No.	7,548	8,000	7,863	8,233	7,822	7,791	..	..
Employment (persons)	No.	505	552	543	550	543	554	..	..
Guest nights	No.	329,278	400,057	339,234	339,321	341,404	380,506	1,401,633	1,400,465
Bed occupancy rate	per cent	47.9	54.4	47.1	46.3	48.0	53.1	49.2	48.6
Guest arrivals	No.	123,535	156,127	124,599	135,787	125,871	138,586	523,839	524,843
Average length of stay	days	2.7	2.6	2.7	2.5	2.7	2.7	2.7	2.7
Takings from accommodation	\$'000	3,787	4,542	3,782	3,871	3,866	4,554	15,910	16,073



TABLE 5 — HOTELS, MOTELS AND GUEST HOUSES WITH FACILITIES BY STAR GRADING, QUEENSLAND (a)

Particulars	Star grading						Ungraded	Total
	1	2	3	4	5			
<b>ESTABLISHMENTS, CAPACITY AND EMPLOYMENT</b>								
<i>September quarter 1993—</i>								
Establishments	22	455	396	53	18	172	1,116	
Guest rooms	321	8,409	15,027	7,759	5,533	2,975	40,024	
Bed spaces	955	25,171	46,103	24,499	r 16,048	8,705	r 121,481	
Employment (persons)	157	3,818	7,842	5,905	8,703	2,294	28,719	
<i>September quarter 1994—</i>								
Establishments	18	449	406	52	17	153	1,095	
Guest rooms	300	8,513	15,905	7,571	5,286	2,807	40,382	
Bed spaces	872	25,617	48,461	24,676	15,260	8,000	122,886	
Employment (persons)	144	3,826	8,749	6,212	8,732	2,219	29,882	
<b>ROOM NIGHTS OCCUPIED</b>								
<i>September quarter 1993</i>	11,865	458,514	958,809	506,423	335,816	147,966	2,419,393	
<i>1994—</i>								
July	3,889	160,954	342,809	174,259	118,334	45,026	845,271	
August	3,661	160,345	345,720	178,529	126,709	48,961	863,925	
September	3,935	160,273	339,615	171,821	123,647	46,963	846,254	
<i>September quarter 1994</i>	11,485	481,572	1,028,144	524,609	368,690	140,950	2,555,450	
<b>ROOM OCCUPANCY RATES (per cent)</b>								
<i>September quarter 1993</i>	40.2	59.4	69.4	71.0	66.0	54.1	65.7	
<i>1994—</i>								
July	41.8	61.0	69.6	74.2	72.2	55.8	67.9	
August	39.4	60.8	70.1	76.1	77.3	56.6	69.0	
September	43.7	62.8	71.2	75.6	78.0	55.8	69.9	
<i>September quarter 1994</i>	41.6	61.5	70.3	75.3	75.8	56.1	68.9	
<b>GUEST NIGHTS</b>								
<i>September quarter 1993</i>	20,433	843,433	1,801,473	974,908	608,358	276,813	4,525,418	
<i>1994—</i>								
July	7,410	297,765	649,017	344,361	214,474	83,837	1,596,864	
August	6,466	287,642	638,182	347,874	222,572	89,309	1,592,045	
September	7,545	307,084	656,706	342,854	227,369	89,901	1,631,459	
<i>September quarter 1994</i>	21,421	892,491	1,943,905	1,035,089	664,415	263,047	4,820,368	
<b>BED OCCUPANCY RATES (per cent)</b>								
<i>September quarter 1993</i>	23.3	36.5	42.5	43.3	r 41.2	34.6	r 40.5	
<i>1994—</i>								
July	27.4	37.5	43.2	45.0	45.3	35.9	42.1	
August	23.9	36.2	42.5	45.5	47.0	36.2	41.8	
September	28.8	40.0	45.2	46.3	49.7	37.5	44.3	
<i>September quarter 1994</i>	26.7	37.9	43.6	45.6	47.3	36.5	42.7	
<b>GUEST ARRIVALS</b>								
<i>September quarter 1993</i>	12,100	471,851	804,820	316,809	180,946	101,873	1,888,399	
<i>1994—</i>								
July	4,252	168,459	289,862	121,225	75,741	29,971	689,510	
August	3,875	156,724	278,885	123,168	76,145	31,133	669,930	
September	4,138	166,380	286,519	116,326	77,815	29,986	681,164	
<i>September quarter 1994</i>	12,265	491,563	855,266	360,719	229,701	91,090	2,040,604	
<b>AVERAGE LENGTH OF STAY (days)</b>								
<i>September quarter 1993</i>	1.7	1.8	2.2	3.1	3.4	2.7	2.4	
<i>September quarter 1994</i>	1.7	1.8	2.3	2.9	2.9	2.9	2.4	
<b>TAKINGS FROM ACCOMMODATION (\$'000)</b>								
<i>September quarter 1993</i>	576	19,983	66,397	50,244	48,684	9,614	195,498	
<i>1994—</i>								
July	234	7,667	24,973	18,603	18,168	2,812	72,458	
August	212	7,562	25,557	19,123	19,474	3,144	75,072	
September	260	7,711	25,685	18,808	19,453	3,110	75,029	
<i>September quarter 1994</i>	706	22,941	76,216	56,534	57,095	9,067	222,559	

(a) From December quarter 1993, establishments with fewer than 5 rooms have been formally excluded from the scope of this collection. See Explanatory Note 2 (page 29).



TABLE 6 — HOTELS, MOTELS AND GUEST HOUSES WITH FACILITIES BY STATISTICAL DIVISION,  
QUEENSLAND (a) — continued

Particulars	Darling Downs (SD)			South-West (SD)		Fitzroy (SD)	
	Licensed hotels	Motels, etc.	Total	Total	Licensed hotels	Motels, etc.	Total
ESTABLISHMENTS, CAPACITY AND EMPLOYMENT							
<i>September quarter 1993</i>							
Establishments	23	79	102	30	32	82	114
Guest rooms	385	1,354	1,739	441	1,084	1,979	3,063
Bed spaces	1,021	4,211	5,232	1,211	3,246	6,020	9,266
Employment (persons)	307	454	761	152	1,021	733	1,754
<i>September quarter 1994</i>							
Establishments	20	80	100	30	31	85	116
Guest rooms	384	1,367	1,751	470	1,079	2,059	3,138
Bed spaces	1,031	4,291	5,322	1,276	3,319	6,299	9,618
Employment (persons)	323	470	793	158	1,132	747	1,879
ROOM NIGHTS OCCUPIED							
<i>September quarter 1993</i>	14,839	72,723	87,562	20,501	51,205	120,781	171,986
<i>1994</i>							
July	4,645	23,981	28,626	7,736	16,295	41,273	57,568
August	4,779	22,996	27,775	7,687	17,077	42,047	59,124
September	5,444	26,913	32,357	7,095	18,516	41,785	60,301
<i>September quarter 1994</i>	14,868	73,890	88,758	22,518	51,888	125,105	176,993
ROOM OCCUPANCY RATES (per cent)							
<i>September quarter 1993</i>	41.9	58.6	54.9	50.5	51.3	66.3	61.0
<i>1994—</i>							
July	39.4	56.6	52.9	53.1	48.7	64.7	59.2
August	40.6	54.3	51.3	52.8	51.1	65.9	60.8
September	47.8	65.6	61.7	50.3	57.2	67.6	64.1
<i>September quarter 1994</i>	42.5	58.8	55.2	52.1	52.3	66.0	61.3
GUEST NIGHTS							
<i>September quarter 1993</i>	24,047	133,999	158,046	32,131	89,182	204,392	293,574
<i>1994</i>							
July	7,692	44,007	51,699	12,242	31,227	68,812	100,039
August	7,002	40,120	47,122	11,738	30,995	67,203	98,198
September	9,047	51,442	60,489	11,456	35,537	71,014	106,551
<i>September quarter 1994</i>	23,741	135,569	159,310	35,436	97,759	207,029	304,788
BED OCCUPANCY RATES (per cent)							
<i>September quarter 1993</i>	25.6	34.8	33.0	28.8	29.9	36.9	34.4
<i>1994—</i>							
July	24.3	33.1	31.4	30.9	30.4	35.2	33.6
August	22.1	30.2	28.6	29.7	30.1	34.4	32.9
September	29.5	40.0	38.0	29.9	35.7	37.6	36.9
<i>September quarter 1994</i>	25.3	34.3	32.6	30.2	32.0	35.7	34.4
GUEST ARRIVALS							
<i>September quarter 1993</i>	14,150	103,502	117,652	25,168	32,896	132,557	165,453
<i>1994—</i>							
July	4,967	34,665	39,632	9,570	10,909	45,515	56,424
August	4,536	31,704	36,240	8,735	10,872	43,024	53,896
September	5,435	38,987	44,422	8,902	11,032	46,064	57,096
<i>September quarter 1994</i>	14,938	105,356	120,294	27,207	32,813	134,603	167,416
AVERAGE LENGTH OF STAY (days)							
<i>September quarter 1993</i>	1.7	1.3	1.3	1.3	2.7	1.5	1.8
<i>September quarter 1994</i>	1.6	1.3	1.3	1.3	3.0	1.5	1.8
TAKINGS FROM ACCOMMODATION (\$'000)							
<i>September quarter 1993</i>	755	3,882	4,637	999	3,770	6,367	10,137
<i>1994</i>							
July	263	1,312	1,576	390	1,418	2,264	3,682
August	284	1,217	1,500	385	1,397	2,289	3,686
September	327	1,467	1,794	367	1,699	2,311	4,010
<i>September quarter 1994</i>	874	3,996	4,870	1,141	4,514	6,864	11,378

TABLE 6 — HOTELS, MOTELS AND GUEST HOUSES WITH FACILITIES BY STATISTICAL DIVISION,  
QUEENSLAND (a) — continued

Particulars	Central-West (SD)			Mackay (SD)		Northern (SD)		
	Total	Licensed hotels	Motels, etc.	Total	Licensed hotels	Motels, etc.	Total	
ESTABLISHMENTS, CAPACITY AND EMPLOYMENT								
<i>September quarter 1993</i>								
Establishments	15	30	60	90	23	55	78	
Guest rooms	284	2,674	1,590	4,264	790	1,668	2,458	
Bed spaces	880	8,719	5,126	13,845	2,375	5,099	7,474	
Employment (persons)	110	2,349	598	2,947	1,120	548	1,668	
<i>September quarter 1994—</i>								
Establishments	16	28	60	88	21	57	78	
Guest rooms	295	2,725	1,517	4,242	782	1,814	2,596	
Bed spaces	900	8,959	4,850	13,809	2,136	5,543	7,679	
Employment (persons)	134	2,518	576	3,094	1,119	682	1,801	
ROOM NIGHTS OCCUPIED								
<i>September quarter 1993</i>								
	17,909	137,190	93,878	231,068	49,953	100,029	149,982	
<i>1994—</i>								
July	7,067	49,173	28,878	78,051	16,904	39,715	56,619	
August	6,706	53,800	29,124	82,924	17,831	37,584	55,415	
September	6,528	60,131	30,139	90,270	15,152	33,701	48,853	
<i>September quarter 1994</i>	20,301	163,104	88,141	251,245	49,887	111,000	160,887	
ROOM OCCUPANCY RATES (per cent)								
<i>September quarter 1993</i>								
	68.5	55.8	64.2	58.9	68.7	65.2	66.3	
<i>1994—</i>								
July	77.3	58.2	61.4	59.4	71.4	70.6	70.8	
August	73.3	63.7	61.9	63.1	73.6	66.8	68.9	
September	73.8	73.6	66.2	70.9	64.6	61.9	62.7	
<i>September quarter 1994</i>	74.8	65.1	63.2	64.4	69.9	66.5	67.5	
GUEST NIGHTS								
<i>September quarter 1993</i>								
	33,706	276,827	172,805	449,632	78,285	181,667	259,952	
<i>1994—</i>								
July	13,051	106,892	53,444	160,336	27,494	69,131	96,625	
August	11,949	117,735	51,944	169,679	28,524	65,830	94,354	
September	11,985	134,533	59,457	193,990	24,210	60,424	84,634	
<i>September quarter 1994</i>	36,985	359,160	164,845	524,005	80,228	195,385	275,613	
BED OCCUPANCY RATES (per cent)								
<i>September quarter 1993</i>								
	41.6	34.5	36.6	35.3	35.8	38.7	37.8	
<i>1994—</i>								
July	46.8	38.5	35.5	37.5	42.4	40.2	40.8	
August	42.8	42.4	34.5	39.6	43.1	38.3	39.6	
September	44.4	50.1	40.9	46.8	37.8	36.3	36.7	
<i>September quarter 1994</i>	44.7	43.6	36.9	41.2	41.1	38.3	39.1	
GUEST ARRIVALS								
<i>September quarter 1993</i>								
	24,522	87,381	91,665	179,046	38,220	102,030	140,250	
<i>1994—</i>								
July	9,253	30,987	29,168	60,155	16,349	37,240	53,589	
August	8,506	31,356	27,328	58,684	18,482	34,013	52,495	
September	7,981	34,996	30,484	65,480	14,704	33,318	48,022	
<i>September quarter 1994</i>	25,740	97,339	86,980	184,319	49,535	104,571	154,106	
AVERAGE LENGTH OF STAY (days)								
<i>September quarter 1993</i>								
	1.4	3.2	1.9	2.5	2.0	1.8	1.9	
<i>September quarter 1994</i>								
	1.4	3.7	1.9	2.8	1.6	1.9	1.8	
TAKINGS FROM ACCOMMODATION (\$'000)								
<i>September quarter 1993</i>								
	1,020	15,607	5,283	20,890	3,637	5,229	8,866	
<i>1994—</i>								
July	409	5,648	1,593	7,241	1,316	2,168	3,484	
August	385	6,283	1,625	7,909	1,516	2,214	3,731	
September	370	7,141	1,728	8,869	1,353	1,852	3,205	
<i>September quarter 1994</i>	1,164	19,073	4,947	24,019	4,185	6,235	10,420	











## SELECTED SUBDIVISIONS AND STATISTICAL LOCAL AREAS, QUEENSLAND, SEPTEMBER QUARTER 1994—continued

Guest nights				Guest arrivals				Takings from accommodation (\$'000)			
July	Aug	Sept	Sept. qtr	July	Aug	Sept	Sept. qtr	July	Aug	Sept	Sept. qtr
4,884	5,057	4,968	14,909	3,279	3,233	3,096	9,608	151	173	159	483
1,771	1,530	1,822	5,123	1,001	997	887	2,885	90	64	70	225
8,720	8,814	9,420	26,954	3,055	3,102	3,275	9,432	390	373	385	1,148
2,575	2,537	2,379	7,491	1,300	1,369	1,031	3,700	87	87	79	253
8,144	8,130	7,309	23,583	5,306	5,211	5,053	15,570	306	309	274	888
12,773	12,267	14,195	39,235	8,684	8,228	8,645	25,557	428	422	458	1,309
22,314	21,671	26,526	70,511	7,181	6,868	7,579	21,628	965	968	1,271	3,203
38,216	37,668	39,160	115,044	26,066	24,417	27,035	77,518	1,245	1,273	1,293	3,811
642	524	772	1,938	552	471	495	1,518	20	18	19	57
100,039	98,198	106,551	304,788	56,424	53,896	57,096	167,416	3,682	3,686	4,010	11,378
1,835	1,372	1,718	4,925	1,447	1,259	1,433	4,139	58	44	46	148
7,974	7,486	7,330	22,790	5,118	4,772	4,256	14,146	267	257	249	773
3,242	3,091	2,937	9,270	2,688	2,475	2,292	7,455	84	84	75	243
13,051	11,949	11,985	36,985	9,253	8,506	7,981	25,740	409	385	370	1,164
2,904	2,590	3,231	8,725	2,161	1,710	1,474	5,345	94	97	112	303
50,816	52,448	60,792	164,056	22,382	22,388	25,606	70,376	1,743	1,805	2,047	5,596
4,516	3,965	4,859	13,340	2,813	2,461	3,004	8,278	99	93	104	296
99,634	108,209	122,764	330,607	31,433	30,763	34,112	96,308	5,220	5,828	6,533	17,580
2,466	2,467	2,344	7,277	1,366	1,362	1,284	4,012	85	86	74	245
160,336	169,679	193,990	524,005	60,155	58,684	65,480	184,319	7,241	7,909	8,869	24,019
7,376	6,011	5,863	19,250	4,164	3,369	3,680	11,213	177	153	159	489
3,682	3,238	3,104	10,024	2,756	2,465	2,414	7,635	106	92	86	284
4,868	5,159	4,361	14,388	3,247	3,248	2,783	9,278	151	152	134	438
23,477	24,587	19,634	67,698	15,127	16,848	13,011	44,986	1,225	1,260	1,064	3,549
3,940	3,966	4,080	11,986	2,383	2,282	2,302	6,967	94	90	90	274
15,106	14,110	12,939	42,155	6,296	5,997	5,787	18,080	487	472	421	1,381
7,490	7,244	6,513	21,247	4,633	4,147	4,306	13,086	157	135	139	430
2,276	2,191	2,059	6,526	1,300	1,222	1,270	3,792	53	50	44	147
25,790	24,651	23,395	73,836	12,122	11,218	11,022	34,362	923	1,049	789	2,761
78,079	76,749	68,620	223,448	41,861	41,714	37,698	121,273	2,939	3,056	2,547	8,542
2,620	3,197	2,686	8,503	1,561	1,699	1,447	4,707	112	277	278	667
96,625	94,354	84,634	275,613	53,589	52,495	48,022	154,106	3,484	3,731	3,205	10,420
3,438	2,949	2,883	9,270	2,622	2,340	2,190	7,152	78	71	65	214
95,508	107,661	84,852	288,021	34,473	38,035	29,779	102,287	5,911	6,536	5,801	18,247
117,194	115,837	97,060	330,091	42,314	39,987	35,250	117,551	4,233	4,318	3,677	12,228
212,702	223,498	181,912	618,112	76,787	78,022	65,029	219,838	10,144	10,854	9,477	30,475
17,755	17,258	16,022	51,035	5,889	5,681	5,347	16,917	1,675	1,775	1,479	4,928
5,884	6,230	5,243	17,357	3,559	3,628	2,950	10,137	581	677	609	1,868
71,581	70,863	62,554	204,998	16,042	15,640	14,527	46,209	4,903	5,169	4,597	14,670
2,337	1,962	1,853	6,152	1,515	1,475	1,369	4,359	58	44	40	142
643	475	582	1,700	360	277	406	1,043	13	10	12	35
9,484	8,718	8,563	26,765	4,421	4,277	3,993	12,691	284	279	259	822
5,592	5,332	4,722	15,646	1,876	1,820	1,563	5,259	148	144	129	421
65,041	60,837	50,374	176,252	14,961	12,765	10,534	38,260	2,732	2,610	2,128	7,469
4,583	3,811	3,445	11,839	2,083	1,978	1,404	5,465	307	258	221	786
399,040	401,933	338,153	1,139,126	130,115	127,903	109,312	367,330	20,921	21,892	19,017	61,830
1,931	2,082	1,530	5,543	1,352	1,204	1,104	3,660	59	71	64	194
1,487	1,790	1,339	4,616	1,255	1,340	959	3,554	45	60	45	151
1,484	1,460	1,547	4,491	1,204	1,118	1,286	3,608	35	38	42	115
11,377	11,258	10,055	32,690	6,079	5,681	5,177	16,937	455	463	390	1,309
1,267	1,459	1,055	3,781	974	1,183	798	2,955	39	36	32	108
17,546	18,049	15,526	51,121	10,864	10,526	9,324	30,714	634	668	574	1,876
1,596,864	1,592,045	1,631,459	4,820,368	689,510	669,930	681,164	2,040,604	72,458	75,072	75,029	222,559
21,084	18,956	25,768	65,808	9,193	8,570	10,950	28,713	927	1,020	1,295	3,242
13,027	12,153	13,723	38,903	7,081	6,431	7,068	20,580	619	598	635	1,852
3,911	3,990	4,337	12,238	2,708	2,462	2,658	7,828	109	103	121	333
113,856	124,201	137,644	375,701	30,820	30,154	33,504	94,478	7,793	8,698	9,415	25,906
45,773	39,354	51,718	136,845	11,473	11,419	11,819	34,711	2,739	2,496	3,084	8,319
55,248	53,808	60,668	169,724	21,636	19,973	22,537	64,146	1,557	1,588	1,715	4,859
101,021	93,162	112,386	306,569	33,109	31,392	34,356	98,857	4,296	4,084	4,798	13,178

TABLE 8—HOLIDAY FLATS, UNITS AND HOUSES BY STATISTICAL DIVISION, QUEENSLAND

Particulars	Brisbane (SD)			Moreton (SD)			Wide Bay-Burnett (SD)			Fitzroy (SD)
	Real estate agents	Other letting entities	Total	Real estate agents	Other letting entities	Total	Real estate agents	Other letting entities	Total	Total
LETTING ENTITIES, CAPACITY AND EMPLOYMENT										
September quarter 1993—										
Letting entities	5	25	30	62	331	393	16	22	38	11
Flats, units and houses										
Single bedroom	11	172	183	186	2,070	2,256	24	26	50	n.p.
Multiple bedroom	206	282	488	3,710	6,845	10,555	381	158	539	n.p.
Total flats, units and houses	217	454	671	3,896	8,915	12,811	405	184	589	n.p.
Bed spaces	1,208	1,813	3,021	16,781	34,187	50,968	1,966	764	2,730	n.p.
Employment (persons) (a)	—	107	107	—	1,404	1,404	—	62	62	n.p.
September quarter 1994—										
Letting entities	6	26	32	60	351	411	16	28	44	11
Flats, units and houses										
Single bedroom	16	189	205	173	2,055	2,228	28	33	61	55
Multiple bedroom	246	295	541	3,626	7,602	11,228	425	283	708	44
Total flats, units and houses	262	484	746	3,799	9,657	13,456	453	316	769	99
Bed spaces	1,327	1,932	3,259	16,262	37,592	53,854	2,141	1,515	3,656	381
Employment (persons) (a)	—	99	99	—	1,548	1,548	—	117	117	24
UNIT NIGHTS OCCUPIED										
September quarter 1993	10,964	25,547	36,511	217,564	633,800	851,364	18,328	14,121	32,449	n.p.
1994—										
July	3,072	10,289	13,361	70,015	227,533	297,548	6,208	7,037	13,245	2,170
August	3,836	10,675	14,511	67,939	230,766	298,705	7,312	7,104	14,416	2,155
September	4,333	11,335	15,668	65,393	219,788	285,181	8,389	7,610	15,999	2,076
September quarter 1994	11,241	32,299	43,540	203,347	678,087	881,434	21,909	21,751	43,660	6,401
UNIT OCCUPANCY RATES (per cent)										
September quarter 1993	54.9	63.7	60.8	60.7	77.3	72.2	49.2	83.4	59.9	n.p.
1994—										
July	37.8	68.6	57.8	59.5	76.0	71.3	44.2	72.4	55.7	70.7
August	47.2	71.1	62.7	57.7	77.1	71.6	52.1	74.2	61.1	70.2
September	55.1	78.1	70.0	57.4	75.9	70.7	61.7	81.6	69.8	69.9
September quarter 1994	46.6	72.5	63.4	58.2	76.3	71.2	52.6	76.0	62.1	70.3
UNIT LETTINGS										
September quarter 1993	1,917	3,826	5,743	18,166	89,157	107,323	1,909	2,848	4,757	n.p.
1994—										
July	506	1,922	2,428	5,203	32,053	37,256	571	1,614	2,185	691
August	588	1,976	2,564	4,994	29,874	34,868	637	1,832	2,469	642
September	761	2,181	2,942	6,350	33,202	39,552	803	2,132	2,935	690
September quarter 1994	1,855	6,079	7,934	16,547	95,129	111,676	2,011	5,578	7,589	2,023
AVERAGE LENGTH OF STAY (days)										
September quarter 1993	5.7	6.7	6.4	12.0	7.1	7.9	9.6	5.0	6.8	n.p.
1994—										
July	6.1	5.4	5.5	13.5	7.1	8.0	10.9	4.4	6.1	3.1
August	6.5	5.4	5.7	13.6	7.7	8.6	11.5	3.9	5.8	3.4
September	5.7	5.2	5.3	10.3	6.6	7.2	10.4	3.6	5.5	3.0
September quarter 1994	6.1	5.3	5.5	12.3	7.1	7.9	10.9	3.9	5.8	3.2
TAKINGS FROM ACCOMMODATION (\$'000)										
September quarter 1993	236	1,783	2,018	6,972	36,066	43,038	584	527	1,111	n.p.
1994—										
July	75	674	749	2,612	12,925	15,537	205	337	543	95
August	97	722	818	2,601	13,198	15,799	247	394	641	89
September	118	799	917	3,015	14,387	17,402	333	458	791	92
September quarter 1994	290	2,195	2,485	8,228	40,510	48,738	786	1,189	1,975	277

TABLE 8—HOLIDAY FLATS, UNITS AND HOUSES BY STATISTICAL DIVISION, QUEENSLAND—continued

Particulars	Mackay (SD)	Northern (SD)		Far North (SD)	Balance of State	Queensland			
	Total	Real estate agents	Other letting entities	Total	Total	Total	Real estate agents	Other letting entities	Total
LETTING ENTITIES, CAPACITY AND EMPLOYMENT									
September quarter 1993— Letting entities	20	4	25	29	72	1	92	502	594
Flats, units and houses									
Single bedroom	93	n.p.	n.p.	132	637	n.p.	264	3,141	3,405
Multiple bedroom	111	n.p.	n.p.	169	884	n.p.	4,488	8,321	12,809
Total flats, units and houses	204	n.p.	n.p.	301	1,521	n.p.	4,752	11,462	16,214
Bed spaces	903	n.p.	n.p.	1,376	5,501	n.p.	21,114	43,940	65,054
Employment (persons) (a)	69	n.p.	n.p.	67	294	n.p.	—	2,031	2,031
September quarter 1994— Letting entities	18	4	25	29	79	8	90	542	632
Flats, units and houses									
Single bedroom	117	4	118	122	733	39	262	3,298	3,560
Multiple bedroom	144	56	120	176	917	107	4,465	9,400	13,865
Total flats, units and houses	261	60	238	298	1,650	146	4,727	12,698	17,425
Bed spaces	1,030	313	1,030	1,343	6,310	711	20,690	49,854	70,544
Employment (persons) (a)	80	—	66	66	360	31	—	2,325	2,325
UNIT NIGHTS OCCUPIED									
September quarter 1993	12,509	n.p.	n.p.	18,413	103,743	n.p.	259,636	803,022	1,062,658
1994—									
July	5,002	867	5,766	6,633	42,088	3,198	83,294	299,951	383,245
August	4,959	733	5,518	6,251	42,064	3,139	83,078	303,122	386,200
September	5,158	858	5,191	6,049	35,116	3,259	82,080	286,426	368,506
September quarter 1994	15,119	2,458	16,475	18,933	119,268	9,596	248,452	889,499	1,137,951
UNIT OCCUPANCY RATES (per cent)									
September quarter 1993	66.7	n.p.	n.p.	66.5	74.1	n.p.	59.4	76.3	71.3
1994—									
July	61.8	46.6	78.2	71.8	85.9	70.7	56.8	76.6	71.2
August	61.3	39.4	74.8	67.7	85.2	69.4	56.7	77.4	71.8
September	66.1	47.7	72.7	67.7	71.1	74.4	57.9	75.3	70.6
September quarter 1994	63.0	44.5	75.2	69.1	80.7	71.4	57.1	76.4	71.2
UNIT LETTINGS									
September quarter 1993	3,523	n.p.	n.p.	3,354	22,523	n.p.	24,183	125,559	149,742
1994—									
July	1,549	93	971	1,064	8,275	976	6,895	47,529	54,424
August	1,467	84	979	1,063	8,084	957	6,817	45,297	52,114
September	1,521	102	1,106	1,208	6,853	977	8,510	48,168	56,678
September quarter 1994	4,537	279	3,056	3,335	23,212	2,910	22,222	140,994	163,216
AVERAGE LENGTH OF STAY (days)									
September quarter 1993	3.6	n.p.	n.p.	5.5	4.6	n.p.	10.7	6.4	7.1
1994—									
July	3.2	9.3	5.9	6.2	5.1	3.3	12.1	6.3	7.0
August	3.4	8.7	5.6	5.9	5.2	3.3	12.2	6.7	7.4
September	3.4	8.4	4.7	5.0	5.1	3.3	9.6	5.9	6.5
September quarter 1994	3.3	8.8	5.4	5.7	5.1	3.3	11.2	6.3	7.0
TAKINGS FROM ACCOMMODATION (\$'000)									
September quarter 1993	687	n.p.	n.p.	944	9,339	n.p.	8,665	48,819	57,485
1994—									
July	298	34	314	348	3,659	182	3,162	18,248	21,410
August	303	32	302	334	3,743	170	3,221	18,676	21,897
September	333	38	295	333	3,250	209	3,741	19,586	23,327
September quarter 1994	933	104	911	1,015	10,651	560	10,124	56,510	66,634

(a) Employment numbers exclude real estate agents and their employees.

TABLE 9 — HOLIDAY FLATS, UNITS AND HOUSES: STATISTICAL DIVISIONS AND SELECTED

Statistical Divisions and Selected Subdivisions and Statistical Local Areas	Flats, units and houses				Bed spaces	Employment (persons) (a)	Unit nights occupied			
	Letting entities	Single bedroom	Multiple bedroom	Total			July	Aug.	Sept.	Sept. qtr
<b>Brisbane City (SSD)</b>										
Brisbane City Core (b)	7	73	91	164	615	25	4,254	4,172	4,242	12,668
Toowong	4	15	69	84	334	17	2,033	2,045	2,058	6,136
Balance	9	54	77	131	547	35	3,034	3,052	2,963	9,049
<b>Total</b>	<b>20</b>	<b>142</b>	<b>237</b>	<b>379</b>	<b>1,496</b>	<b>77</b>	<b>9,321</b>	<b>9,269</b>	<b>9,263</b>	<b>27,853</b>
<b>Redland (S) — Balance (c)</b>	<b>8</b>	<b>58</b>	<b>251</b>	<b>309</b>	<b>1,489</b>	<b>20</b>	<b>2,911</b>	<b>4,283</b>	<b>5,392</b>	<b>12,586</b>
Balance	4	5	53	58	274	2	1,129	959	1,013	3,101
<b>Brisbane (SD)</b>	<b>32</b>	<b>205</b>	<b>541</b>	<b>746</b>	<b>3,259</b>	<b>99</b>	<b>13,361</b>	<b>14,511</b>	<b>15,668</b>	<b>43,540</b>
<b>Caboolture (S) — Part B</b>	<b>7</b>	<b>1</b>	<b>253</b>	<b>254</b>	<b>1,290</b>	<b>6</b>	<b>4,139</b>	<b>4,544</b>	<b>4,124</b>	<b>12,807</b>
<b>Gold Coast City (SSD)</b>										
Biggera Waters	4	15	104	119	486	12	2,335	2,129	2,261	6,725
Broadbeach	23	173	558	731	2,691	119	16,083	16,839	15,769	48,691
Burleigh Heads	25	121	785	906	3,513	103	22,331	22,262	18,856	63,449
Coolangatta	25	109	845	954	3,768	80	21,859	21,736	18,659	62,254
Currumbin	5	7	181	188	937	22	4,142	3,742	3,999	11,883
Labrador	5	10	40	50	193	9	1,128	1,137	1,060	3,325
Main Beach-Broadwater	13	15	248	263	1,097	42	6,298	5,667	5,342	17,307
Mermaid Beach	14	20	315	335	1,397	29	8,268	8,067	7,151	23,486
Miami	9	17	157	174	672	21	3,784	3,610	4,045	11,439
Palm Beach	14	3	367	370	1,525	45	8,736	8,154	7,561	24,451
Surfers Paradise	104	1,357	2,237	3,594	12,423	541	85,885	87,827	83,571	257,283
Tugun	7	8	230	238	976	16	6,254	5,148	4,458	15,860
Balance	5	22	61	83	286	20	1,814	1,766	1,671	5,251
<b>Total</b>	<b>253</b>	<b>1,877</b>	<b>6,128</b>	<b>8,005</b>	<b>29,964</b>	<b>1,059</b>	<b>188,917</b>	<b>188,084</b>	<b>174,403</b>	<b>551,404</b>
<b>Sunshine Coast</b>										
Statistical District (d)										
Caloundra (C) — Part A	24	38	1,061	1,099	5,094	47	19,725	18,346	22,356	60,427
Maroochy (S) — Part A	49	105	1,522	1,627	7,011	152	35,970	35,831	32,109	103,910
Noosa (S) — Part A	74	204	2,160	2,364	9,876	238	46,605	49,734	49,907	146,246
<b>Total</b>	<b>147</b>	<b>347</b>	<b>4,743</b>	<b>5,090</b>	<b>21,981</b>	<b>437</b>	<b>102,300</b>	<b>103,911</b>	<b>104,372</b>	<b>310,583</b>
<b>Balance</b>	<b>4</b>	<b>3</b>	<b>104</b>	<b>107</b>	<b>619</b>	<b>46</b>	<b>2,192</b>	<b>2,166</b>	<b>2,282</b>	<b>6,640</b>
<b>Moreton (SD)</b>	<b>411</b>	<b>2,228</b>	<b>11,228</b>	<b>13,456</b>	<b>53,854</b>	<b>1,548</b>	<b>297,548</b>	<b>298,705</b>	<b>285,181</b>	<b>881,434</b>
<b>Burnett (S) — Parts A and B</b>	<b>6</b>	<b>8</b>	<b>112</b>	<b>120</b>	<b>639</b>	<b>25</b>	<b>2,057</b>	<b>2,000</b>	<b>2,353</b>	<b>6,410</b>
Cooloola (S)	4	10	117	127	637	9	904	654	1,381	2,939
Hervey Bay (C)	31	37	458	495	2,261	76	9,628	11,248	11,712	32,588
Balance	3	6	21	27	119	7	656	514	553	1,723
<b>Wide Bay-Burnett (SD)</b>	<b>44</b>	<b>61</b>	<b>708</b>	<b>769</b>	<b>3,656</b>	<b>117</b>	<b>13,245</b>	<b>14,416</b>	<b>15,999</b>	<b>43,660</b>
<b>Darling Downs (SD)</b>	<b>4</b>	<b>2</b>	<b>54</b>	<b>56</b>	<b>352</b>	<b>14</b>	<b>915</b>	<b>809</b>	<b>1,054</b>	<b>2,778</b>
<b>Fitzroy (SD)</b>	<b>11</b>	<b>55</b>	<b>44</b>	<b>99</b>	<b>381</b>	<b>24</b>	<b>2,170</b>	<b>2,155</b>	<b>2,076</b>	<b>6,401</b>
<b>Mackay (C) Parts A and B</b>	<b>4</b>	<b>16</b>	<b>56</b>	<b>72</b>	<b>371</b>	<b>18</b>	<b>1,413</b>	<b>1,527</b>	<b>1,720</b>	<b>4,660</b>
Whitsunday (S)	14	101	88	189	659	62	3,589	3,432	3,438	10,459
<b>Mackay (SD)</b>	<b>18</b>	<b>117</b>	<b>144</b>	<b>261</b>	<b>1,030</b>	<b>80</b>	<b>5,002</b>	<b>4,959</b>	<b>5,158</b>	<b>15,119</b>
<b>Townsville (C)</b>										
Magnetic Island	12	46	86	132	612	17	2,714	2,539	2,593	7,846
North Ward-Castle Hill	6	13	42	55	243	15	1,430	1,427	1,232	4,089
Balance	3	13	24	37	157	8	1,017	885	840	2,742
<b>Total</b>	<b>21</b>	<b>72</b>	<b>152</b>	<b>224</b>	<b>1,012</b>	<b>40</b>	<b>5,161</b>	<b>4,851</b>	<b>4,665</b>	<b>14,677</b>
<b>Balance</b>	<b>8</b>	<b>50</b>	<b>24</b>	<b>74</b>	<b>331</b>	<b>26</b>	<b>1,472</b>	<b>1,400</b>	<b>1,384</b>	<b>4,256</b>
<b>Northern (SD)</b>	<b>29</b>	<b>122</b>	<b>176</b>	<b>298</b>	<b>1,343</b>	<b>66</b>	<b>6,633</b>	<b>6,251</b>	<b>6,049</b>	<b>18,933</b>
<b>Cairns (C)</b>	<b>29</b>	<b>404</b>	<b>394</b>	<b>798</b>	<b>2,945</b>	<b>124</b>	<b>20,067</b>	<b>19,828</b>	<b>16,219</b>	<b>56,114</b>
Douglas (S)	23	95	278	373	1,480	74	9,876	10,225	9,246	29,347
Johnstone (S)	3	5	39	44	198	2	556	604	634	1,794
Mulgrave (S) — Parts A and B	20	219	193	412	1,574	148	11,210	11,036	8,646	30,892
Balance	4	10	13	23	113	12	379	371	371	1,121
<b>Far North (SD)</b>	<b>79</b>	<b>733</b>	<b>917</b>	<b>1,650</b>	<b>6,310</b>	<b>360</b>	<b>42,088</b>	<b>42,064</b>	<b>35,116</b>	<b>119,268</b>
<b>Balance of State</b>	<b>4</b>	<b>37</b>	<b>53</b>	<b>90</b>	<b>359</b>	<b>17</b>	<b>2,283</b>	<b>2,330</b>	<b>2,205</b>	<b>6,818</b>
<b>Queensland</b>	<b>632</b>	<b>3,560</b>	<b>13,865</b>	<b>17,425</b>	<b>70,544</b>	<b>2,325</b>	<b>383,245</b>	<b>386,200</b>	<b>368,506</b>	<b>1,137,951</b>

(a) Employment numbers exclude real estate agents and their employees. (b) Brisbane City Core comprises the suburbs of Bowen Hills, City, Dutton Park, Fortitude Valley, Herston, Highgate Hill, Kangaroo Point, Kelvin Grove, Milton, New Farm, Newstead, Paddington, Red Hill, South Brisbane, Spring Hill, West End and Woolloongabba. (c) Redland (S) Balance comprises properties on North Stradbroke and Coochiemudlo Islands. (d) Sunshine Coast Statistical District comprises the more urban coastal portions of Caloundra City and Maroochy and Noosa Shires.

## SUBDIVISIONS AND STATISTICAL LOCAL AREAS, QUEENSLAND, SEPTEMBER QUARTER 1994

Unit occupancy rates (per cent)				Unit lettings				Average length of stay (days)	Takings from accommodation (\$'000)			
July	Aug	Sept.	Sept. qtr	July	Aug.	Sept.	Sept. qtr	Sept. qtr	July	Aug.	Sept.	Sept. qtr
83.7	82.1	86.2	84.0	431	468	487	1,386	9.1	300	301	343	944
78.1	78.5	81.7	79.4	182	194	189	565	10.9	138	146	151	435
74.7	75.2	75.4	75.1	950	923	969	2,842	3.2	150	166	161	477
79.3	78.9	81.5	79.9	1,563	1,585	1,645	4,793	5.8	588	613	655	1,855
30.4	44.7	58.2	44.3	766	914	1,181	2,861	4.4	128	176	225	529
62.8	53.3	58.2	58.1	99	65	116	280	11.1	33	30	37	100
57.8	62.7	70.0	63.4	2,428	2,564	2,942	7,934	5.5	749	818	917	2,485
52.6	57.7	54.1	54.8	443	397	515	1,355	9.5	101	95	135	331
63.3	57.7	63.3	61.4	373	320	426	1,119	6.0	153	141	140	435
71.0	74.3	71.9	72.4	2,688	2,709	2,951	8,348	5.8	925	991	1,038	2,954
79.5	79.3	69.4	76.1	2,090	1,984	2,122	6,196	10.2	1,192	1,155	1,174	3,522
73.9	73.5	65.2	70.9	1,865	1,784	2,062	5,711	10.9	1,250	1,342	1,255	3,847
71.1	64.2	70.9	68.7	623	542	674	1,839	6.5	219	169	280	668
72.8	73.4	70.7	72.3	121	100	129	350	9.5	43	40	40	122
77.2	69.5	67.7	71.5	647	516	585	1,748	9.9	346	353	331	1,030
79.6	77.7	71.2	76.2	759	584	719	2,062	11.4	284	266	287	838
70.2	66.9	77.5	71.5	523	486	607	1,616	7.1	170	171	185	526
76.2	71.1	68.1	71.8	772	587	937	2,296	10.6	479	427	480	1,386
77.1	78.8	77.6	77.9	12,161	11,299	12,046	35,506	7.2	5,127	5,352	5,424	15,903
84.8	69.8	62.4	72.4	557	583	623	1,763	9.0	253	207	229	689
70.5	68.6	67.1	68.8	307	258	274	839	6.3	87	77	96	261
76.1	75.8	72.7	74.9	23,486	21,752	24,155	69,393	7.9	10,529	10,692	10,960	32,181
57.9	53.8	67.8	59.8	1,611	1,338	2,133	5,082	11.9	554	499	783	1,837
71.3	71.0	65.8	69.4	3,870	3,625	4,231	11,726	8.9	1,461	1,403	1,524	4,388
63.6	67.9	70.4	67.2	7,431	7,327	8,070	22,828	6.4	2,727	2,938	3,801	9,466
64.8	65.9	68.4	66.3	12,912	12,290	14,434	39,636	7.8	4,742	4,840	6,108	15,691
66.1	65.3	71.1	67.5	415	429	448	1,292	5.1	166	171	199	536
71.3	71.6	70.7	71.2	37,256	34,868	39,552	111,676	7.9	15,537	15,799	17,402	48,738
55.3	53.8	65.4	58.1	569	535	608	1,712	3.7	112	109	127	349
23.0	16.6	36.2	25.2	125	96	179	400	7.3	31	26	59	117
63.0	73.6	78.9	71.8	1,405	1,780	2,058	5,243	6.2	382	492	586	1,459
78.4	75.5	84.6	79.3	86	58	90	234	7.4	17	14	19	50
55.7	61.1	69.8	62.1	2,185	2,469	2,935	7,589	5.8	543	641	791	1,975
52.7	46.6	62.7	53.9	308	282	336	926	3.0	61	51	75	187
70.7	70.2	69.9	70.3	691	642	690	2,023	3.2	95	89	92	277
63.3	68.4	79.6	70.4	284	294	292	870	5.4	67	62	86	215
61.3	58.6	60.9	60.2	1,265	1,173	1,229	3,667	2.9	231	241	247	718
61.8	61.3	66.1	63.0	1,549	1,467	1,521	4,537	3.3	298	303	333	933
66.3	62.0	65.5	64.6	449	403	424	1,276	6.1	141	137	136	414
83.9	83.7	74.7	80.8	214	234	227	675	6.1	73	74	69	216
88.7	77.2	75.7	80.6	169	171	190	530	5.2	72	68	67	207
74.3	69.9	69.4	71.2	832	808	841	2,481	5.9	286	278	273	837
64.2	61.0	62.3	62.5	232	255	367	854	5.0	62	55	61	178
71.8	67.7	67.7	69.1	1,064	1,063	1,208	3,335	5.7	348	334	333	1,015
85.7	84.7	67.7	79.3	3,947	4,035	3,167	11,149	5.0	1,455	1,532	1,260	4,247
92.0	91.8	83.5	89.1	1,789	1,759	1,664	5,212	5.6	837	838	937	2,613
40.8	44.3	48.0	44.3	103	89	96	288	6.2	35	36	45	115
87.8	86.4	70.0	81.5	2,267	2,082	1,794	6,143	5.0	1,294	1,299	967	3,560
53.2	52.0	53.8	53.0	169	119	132	420	2.7	38	38	41	117
85.9	85.2	71.1	80.7	8,275	8,084	6,853	23,212	5.1	3,659	3,743	3,250	10,651
81.8	83.5	81.7	82.3	668	675	641	1,984	3.4	120	118	134	373
71.2	71.8	70.6	71.2	54,424	52,114	56,678	163,216	7.0	21,410	21,897	23,327	66,634

TABLE 10 — CARAVAN PARKS BY STATISTICAL DIVISION, QUEENSLAND

Particulars	Brisbane (SD)			Moreton (SD)			Wide Bay-Burnett (SD)		
	Short-term	Long-term	Total	Short-term	Long-term	Total	Short-term	Long-term	Total
<b>ESTABLISHMENTS, CAPACITY AND EMPLOYMENT</b>									
<i>September quarter 1993—</i>									
Establishments	7	69	76	33	78	111	34	60	94
Capacity									
On-site vans	42	1,316	1,358	99	1,063	1,162	169	515	684
Other powered sites	253	5,292	5,545	3,163	5,257	8,420	2,216	2,552	4,768
Unpowered sites	923	452	1,375	1,895	1,286	3,181	1,279	729	2,008
Cabins, flats, etc.	28	497	525	211	557	768	176	259	435
<i>Total capacity</i>	<i>1,246</i>	<i>7,557</i>	<i>8,803</i>	<i>5,368</i>	<i>8,163</i>	<i>13,531</i>	<i>3,840</i>	<i>4,055</i>	<i>7,895</i>
Sites occupied by long-term guests	88	5,160	5,248	472	3,986	4,458	326	1,362	1,688
Other sites permanently reserved	186	76	262	282	268	550	126	103	229
Employment (persons)	20	307	327	160	316	476	99	187	286
<i>September quarter 1994—</i>									
Establishments	9	67	76	34	73	107	37	58	95
Capacity									
On-site vans	59	1,336	1,395	104	970	1,074	195	496	691
Other powered sites	271	5,090	5,361	2,946	5,014	7,960	2,207	2,573	4,780
Unpowered sites	902	325	1,227	2,177	910	3,087	1,159	922	2,081
Cabins, flats, etc.	28	585	613	222	544	766	189	237	426
<i>Total capacity</i>	<i>1,260</i>	<i>7,336</i>	<i>8,596</i>	<i>5,449</i>	<i>7,438</i>	<i>12,887</i>	<i>3,750</i>	<i>4,228</i>	<i>7,978</i>
Sites occupied by long-term guests	94	4,915	5,009	448	3,932	4,380	387	1,307	1,694
Other sites permanently reserved	200	54	254	260	272	532	236	71	307
Employment (persons)	22	289	311	186	310	496	117	173	290
<b>SITE NIGHTS OCCUPIED</b>									
<i>September quarter 1993</i>	<i>38,006</i>	<i>527,632</i>	<i>565,638</i>	<i>250,653</i>	<i>474,218</i>	<i>724,871</i>	<i>149,239</i>	<i>201,958</i>	<i>351,197</i>
<i>1994—</i>									
July	12,276	167,671	179,947	83,573	159,622	243,195	56,081	63,057	119,138
August	12,405	168,506	180,911	85,512	160,865	246,377	53,354	63,357	116,711
September	14,018	165,385	179,403	80,233	154,642	234,875	48,285	60,123	108,408
<i>September quarter 1994</i>	<i>38,699</i>	<i>501,562</i>	<i>540,261</i>	<i>249,318</i>	<i>475,129</i>	<i>724,447</i>	<i>157,720</i>	<i>186,537</i>	<i>344,257</i>
<b>SITE OCCUPANCY RATES (per cent)</b>									
<i>September quarter 1993</i>	<i>33.2</i>	<i>76.3</i>	<i>70.1</i>	<i>50.8</i>	<i>63.1</i>	<i>58.2</i>	<i>42.2</i>	<i>54.1</i>	<i>48.4</i>
<i>1994—</i>									
July	31.4	73.7	67.5	49.5	69.2	60.9	48.2	48.1	48.2
August	31.8	74.1	67.9	50.6	69.8	61.7	45.9	48.3	47.2
September	37.1	75.1	69.6	49.1	69.3	60.8	42.9	47.4	45.3
<i>September quarter 1994</i>	<i>33.4</i>	<i>74.3</i>	<i>68.3</i>	<i>49.7</i>	<i>69.4</i>	<i>61.1</i>	<i>45.7</i>	<i>48.0</i>	<i>46.9</i>
<b>TAKINGS FROM ACCOMMODATION (\$'000)</b>									
<i>September quarter 1993</i>	<i>297</i>	<i>4,723</i>	<i>5,020</i>	<i>2,905</i>	<i>4,719</i>	<i>7,624</i>	<i>1,630</i>	<i>1,790</i>	<i>3,420</i>
<i>1994</i>									
July	108	1,526	1,634	992	1,710	2,702	623	573	1,196
August	104	1,539	1,643	965	1,664	2,629	542	605	1,147
September	133	1,576	1,709	1,021	1,680	2,701	584	551	1,135
<i>September quarter 1994</i>	<i>346</i>	<i>4,641</i>	<i>4,987</i>	<i>2,977</i>	<i>5,054</i>	<i>8,031</i>	<i>1,748</i>	<i>1,729</i>	<i>3,478</i>

TABLE 10—CARAVAN PARKS BY STATISTICAL DIVISION, QUEENSLAND—continued

Particulars	Darting Downs (SD)			South-West (SD)			Fitzroy (SD)		
	Short-term	Long-term	Total	Short-term	Long-term	Total	Short-term	Long-term	Total
<b>ESTABLISHMENTS, CAPACITY AND EMPLOYMENT</b>									
<i>September quarter 1993—</i>									
Establishments	12	32	44	8	10	18	33	37	70
Capacity									
On-site vans	84	248	332	28	56	84	118	484	602
Other powered sites	288	896	1,184	128	237	365	1,060	2,018	3,078
Unpowered sites	391	475	866	378	80	458	772	471	1,243
Cabins, flats, etc.	48	89	137	18	17	35	141	238	379
<i>Total capacity</i>	<i>811</i>	<i>1,708</i>	<i>2,519</i>	<i>552</i>	<i>390</i>	<i>942</i>	<i>2,091</i>	<i>3,211</i>	<i>5,302</i>
Sites occupied by long-term guests	45	435	480	13	93	106	223	1,156	1,379
Other sites permanently reserved	1	7	8	—	1	1	25	26	51
Employment (persons)	28	72	100	23	15	38	111	133	244
<i>September quarter 1994—</i>									
Establishments	14	30	44	6	12	18	32	40	72
Capacity									
On-site vans	83	242	325	26	69	95	103	497	600
Other powered sites	385	860	1,245	94	257	351	1,046	2,005	3,051
Unpowered sites	424	391	815	173	79	252	601	393	994
Cabins, flats, etc.	75	72	147	2	22	24	140	249	389
<i>Total capacity</i>	<i>967</i>	<i>1,565</i>	<i>2,532</i>	<i>295</i>	<i>427</i>	<i>722</i>	<i>1,890</i>	<i>3,144</i>	<i>5,034</i>
Sites occupied by long-term guests	81	375	456	7	102	109	180	1,120	1,300
Other sites permanently reserved	2	15	17	1	2	3	35	40	75
Employment (persons)	32	61	93	12	19	31	110	151	261
<b>SITE NIGHTS OCCUPIED</b>									
<i>September quarter 1993</i>	<i>11,007</i>	<i>58,507</i>	<i>69,514</i>	<i>8,298</i>	<i>13,200</i>	<i>21,498</i>	<i>83,073</i>	<i>145,885</i>	<i>228,958</i>
<i>1994</i>									
July	6,835	15,299	22,134	2,311	5,647	7,958	30,372	50,086	80,458
August	6,558	15,779	22,337	1,623	5,302	6,925	29,039	48,493	77,532
September	6,732	15,713	22,445	1,263	4,948	6,211	20,989	46,305	67,294
<i>September quarter 1994</i>	<i>20,125</i>	<i>46,791</i>	<i>66,916</i>	<i>5,197</i>	<i>15,897</i>	<i>21,094</i>	<i>80,400</i>	<i>144,884</i>	<i>225,284</i>
<b>SITE OCCUPANCY RATES (per cent)</b>									
<i>September quarter 1993</i>	<i>14.8</i>	<i>37.2</i>	<i>30.0</i>	<i>16.3</i>	<i>36.8</i>	<i>24.8</i>	<i>43.2</i>	<i>49.4</i>	<i>46.9</i>
<i>1994—</i>									
July	22.8	31.5	28.2	25.3	42.7	35.6	51.8	51.4	51.6
August	21.9	32.5	28.5	17.7	40.1	30.9	49.6	49.8	49.7
September	23.4	33.5	29.7	14.3	38.6	28.7	37.0	49.1	44.6
<i>September quarter 1994</i>	<i>22.7</i>	<i>32.5</i>	<i>28.8</i>	<i>19.1</i>	<i>40.5</i>	<i>31.8</i>	<i>46.2</i>	<i>50.1</i>	<i>48.6</i>
<b>TAKINGS FROM ACCOMMODATION (\$'000)</b>									
<i>September quarter 1993</i>	<i>143</i>	<i>543</i>	<i>686</i>	<i>91</i>	<i>127</i>	<i>218</i>	<i>920</i>	<i>1,363</i>	<i>2,283</i>
<i>1994—</i>									
July	91	132	222	29	53	82	350	482	832
August	85	135	220	20	52	72	321	469	791
September	92	141	234	17	45	62	266	450	716
<i>September quarter 1994</i>	<i>268</i>	<i>408</i>	<i>676</i>	<i>66</i>	<i>151</i>	<i>216</i>	<i>937</i>	<i>1,402</i>	<i>2,339</i>

TABLE 10 — CARAVAN PARKS BY STATISTICAL DIVISION, QUEENSLAND—*continued*

Particulars	Central-West (SD)			Mackay (SD)			Northern (SD)		
	Short-term	Long-term	Total	Short-term	Long-term	Total	Short-term	Long-term	Total
<b>ESTABLISHMENTS, CAPACITY AND EMPLOYMENT</b>									
<i>September quarter 1993—</i>									
Establishments	10	—	10	17	28	45	15	29	44
Capacity									
On-site vans	58	—	58	120	235	355	122	260	382
Other powered sites	297	—	297	495	1,667	2,162	623	1,531	2,154
Unpowered sites	387	—	387	248	477	725	279	480	759
Cabins, flats, etc.	42	—	42	133	118	251	81	153	234
<i>Total capacity</i>	<i>784</i>	<i>—</i>	<i>784</i>	<i>996</i>	<i>2,497</i>	<i>3,493</i>	<i>1,105</i>	<i>2,424</i>	<i>3,529</i>
Sites occupied by long-term guests	37	—	37	84	801	885	121	919	1,040
Other sites permanently reserved	3	—	3	12	20	32	6	5	11
Employment (persons)	21	—	21	57	83	140	61	100	161
<i>September quarter 1994—</i>									
Establishments	10	—	10	18	29	47	15	30	45
Capacity									
On-site vans	48	—	48	115	262	377	110	277	387
Other powered sites	315	—	315	608	1,689	2,297	618	1,512	2,130
Unpowered sites	295	—	295	253	422	675	193	548	741
Cabins, flats, etc.	51	—	51	142	151	293	60	174	234
<i>Total capacity</i>	<i>709</i>	<i>—</i>	<i>709</i>	<i>1,118</i>	<i>2,524</i>	<i>3,642</i>	<i>981</i>	<i>2,511</i>	<i>3,492</i>
Sites occupied by long-term guests	18	—	18	70	735	805	94	1,009	1,103
Other sites permanently reserved	5	—	5	76	8	84	6	15	21
Employment (persons)	28	—	28	75	88	163	62	105	167
<b>SITE NIGHTS OCCUPIED</b>									
<i>September quarter 1993</i>	<i>23,027</i>	<i>—</i>	<i>23,027</i>	<i>51,283</i>	<i>105,687</i>	<i>156,970</i>	<i>57,576</i>	<i>124,059</i>	<i>181,635</i>
<i>1994—</i>									
July	8,058	—	8,058	20,151	34,685	54,836	20,138	44,097	64,235
August	6,489	—	6,489	19,607	34,101	53,708	18,779	45,745	64,524
September	4,712	—	4,712	16,186	31,173	47,359	14,689	39,290	53,979
<i>September quarter 1994</i>	<i>19,259</i>	<i>—</i>	<i>19,259</i>	<i>55,944</i>	<i>99,959</i>	<i>155,903</i>	<i>53,606</i>	<i>129,132</i>	<i>182,738</i>
<b>SITE OCCUPANCY RATES (per cent)</b>									
<i>September quarter 1993</i>	<i>31.9</i>	<i>—</i>	<i>31.9</i>	<i>56.0</i>	<i>46.0</i>	<i>48.8</i>	<i>56.6</i>	<i>55.6</i>	<i>55.9</i>
<i>1994—</i>									
July	36.7	—	36.7	58.1	44.3	48.6	66.2	56.7	59.3
August	29.5	—	29.5	56.6	43.6	47.6	64.4	58.8	60.3
September	22.2	—	22.2	48.3	41.2	43.3	52.0	52.2	52.1
<i>September quarter 1994</i>	<i>29.5</i>	<i>—</i>	<i>29.5</i>	<i>54.4</i>	<i>43.0</i>	<i>46.5</i>	<i>61.0</i>	<i>55.9</i>	<i>57.3</i>
<b>TAKINGS FROM ACCOMMODATION (\$'000)</b>									
<i>September quarter 1993</i>	<i>327</i>	<i>—</i>	<i>327</i>	<i>749</i>	<i>1,005</i>	<i>1,754</i>	<i>714</i>	<i>1,299</i>	<i>2,012</i>
<i>1994—</i>									
July	133	—	133	305	359	663	239	515	754
August	107	—	107	284	349	632	222	518	740
September	85	—	85	266	332	597	176	431	608
<i>September quarter 1994</i>	<i>325</i>	<i>—</i>	<i>325</i>	<i>854</i>	<i>1,039</i>	<i>1,893</i>	<i>638</i>	<i>1,464</i>	<i>2,102</i>



TABLE 10—CARAVAN PARKS BY STATISTICAL DIVISION, QUEENSLAND—continued

Particulars	Far North (SD)			North-West (SD)			Queensland		
	Short-term	Long-term	Total	Short-term	Long-term	Total	Short-term	Long-term	Total
ESTABLISHMENTS, CAPACITY AND EMPLOYMENT									
<i>September quarter 1993—</i>									
Establishments	46	46	92	11	11	22	226	400	626
Capacity									
On-site vans	225	489	714	29	70	99	1,094	4,736	5,830
Other powered sites	1,734	1,892	3,626	366	649	1,015	10,623	21,991	32,614
Unpowered sites	1,495	876	2,371	257	220	477	8,304	5,546	13,850
Cabins, flats, etc.	287	321	608	39	18	57	1,204	2,267	3,471
<i>Total capacity</i>	<i>3,741</i>	<i>3,578</i>	<i>7,319</i>	<i>691</i>	<i>957</i>	<i>1,648</i>	<i>21,225</i>	<i>34,540</i>	<i>55,765</i>
Sites occupied by long-term guests	339	1,079	1,418	41	357	398	1,789	15,348	17,137
Other sites permanently reserved	50	46	96	—	—	—	691	552	1,243
Employment (persons)	176	157	333	38	22	60	794	1,392	2,186
<i>September quarter 1994—</i>									
Establishments	47	45	92	17	9	26	239	393	632
Capacity									
On-site vans	174	530	704	36	66	102	1,053	4,745	5,798
Other powered sites	1,736	1,840	3,576	512	596	1,108	10,738	21,436	32,174
Unpowered sites	1,234	926	2,160	484	124	608	7,895	5,040	12,935
Cabins, flats, etc.	345	307	652	49	18	67	1,303	2,359	3,662
<i>Total capacity</i>	<i>3,489</i>	<i>3,603</i>	<i>7,092</i>	<i>1,081</i>	<i>804</i>	<i>1,885</i>	<i>20,989</i>	<i>33,580</i>	<i>54,569</i>
Sites occupied by long-term guests	372	1,071	1,443	61	320	381	1,812	14,886	16,698
Other sites permanently reserved	28	36	64	1	—	1	850	513	1,363
Employment (persons)	197	159	356	55	18	73	896	1,373	2,269
SITE NIGHTS OCCUPIED									
<i>September quarter 1993</i>	<i>172,543</i>	<i>172,681</i>	<i>345,224</i>	<i>25,287</i>	<i>46,615</i>	<i>71,902</i>	<i>869,992</i>	<i>1,870,442</i>	<i>2,740,434</i>
<i>1994—</i>									
July	60,649	58,634	119,283	12,772	16,034	28,806	313,216	614,832	928,048
August	61,733	55,740	117,473	10,688	15,777	26,465	305,787	613,665	919,452
September	47,509	48,401	95,910	5,208	12,826	18,034	259,824	578,806	838,630
<i>September quarter 1994</i>	<i>169,891</i>	<i>162,775</i>	<i>332,666</i>	<i>28,668</i>	<i>44,637</i>	<i>73,305</i>	<i>878,827</i>	<i>1,807,303</i>	<i>2,686,130</i>
SITE OCCUPANCY RATES (per cent)									
<i>September quarter 1993</i>	<i>50.1</i>	<i>52.5</i>	<i>51.3</i>	<i>39.8</i>	<i>52.9</i>	<i>47.4</i>	<i>44.6</i>	<i>58.9</i>	<i>53.5</i>
<i>1994—</i>									
July	56.1	52.5	54.3	38.1	64.3	49.3	48.1	59.1	54.9
August	57.1	49.9	53.4	31.9	63.3	45.3	47.1	59.0	54.4
September	45.4	44.8	45.1	16.1	53.2	31.9	41.4	57.5	51.3
<i>September quarter 1994</i>	<i>52.9</i>	<i>49.1</i>	<i>51.0</i>	<i>28.8</i>	<i>60.3</i>	<i>42.3</i>	<i>45.6</i>	<i>58.5</i>	<i>53.5</i>
TAKINGS FROM ACCOMMODATION (\$'000)									
<i>September quarter 1993</i>	<i>2,243</i>	<i>2,092</i>	<i>4,335</i>	<i>276</i>	<i>559</i>	<i>835</i>	<i>10,295</i>	<i>18,219</i>	<i>28,515</i>
<i>1994—</i>									
July	931	713	1,645	142	196	338	3,942	6,260	10,202
August	903	669	1,572	125	197	322	3,677	6,198	9,875
September	687	575	1,262	65	153	218	3,393	5,935	9,327
<i>September quarter 1994</i>	<i>2,522</i>	<i>1,957</i>	<i>4,479</i>	<i>332</i>	<i>546</i>	<i>878</i>	<i>11,012</i>	<i>18,393</i>	<i>29,404</i>

TABLE 11 — CARAVAN PARKS: STATISTICAL DIVISIONS AND SELECTED SUBDIVISIONS

Statistical Divisions and Selected Subdivisions and Statistical Local Areas	Capacity					Total	Sites occupied by long-term guests	Other sites permanently reserved	Employment (persons)
	Establishments	On-site vans	Other powered sites	Unpowered sites	Cabins, flats, etc.				
Albert (S) — Part A	4	28	353	30	16	427	250	-	18
Brisbane City (SSD)									
Aspley	3	89	410	2	71	572	401	---	31
Eight Mile Plains	4	225	403	35	60	723	428	16	27
Balance	17	320	1,830	46	100	2,296	1,543	6	83
Total	24	634	2,643	83	231	3,591	2,372	22	141
Caboolture (S) — Part A	5	153	338	13	20	524	374	1	14
Ipswich (C)	4	125	261		45	431	286	---	18
Logan City (SSD)	12	259	677	70	147	1,153	819	7	49
Redcliffe City (SSD)	10	84	320	33	23	460	279	22	32
Redland Shire (SSD)	13	78	474	978	47	1,577	278	202	27
Balance	4	34	295	20	84	433	351	..	12
<i>Brisbane (SD)</i>	76	1,395	5,361	1,227	613	8,596	5,009	254	311
Albert (S) — Part B	9	197	833	98	18	1,146	743	10	43
Caboolture (S) — Part B	8	50	855	55	39	999	480	148	39
Caloundra (C) — Parts A and B	16	109	875	304	132	1,420	512	112	57
Esk (S)	4	29	134	150	9	322	41	5	8
Gold Coast City (SSD)									
Labrador	4	71	380	205	56	712	287		26
Balance	14	171	2,106	190	148	2,615	1,116	104	85
Total	18	242	2,486	395	204	3,327	1,403	104	111
Maroochy (S) — Parts A and B	25	205	1,760	462	201	2,628	751	101	107
Noosa (S) — Parts A and B	12	67	498	966	81	1,612	128	52	80
Balance	15	175	519	657	82	1,433	322	---	51
<i>Moreton (SD)</i>	107	1,074	7,960	3,087	766	12,887	4,380	532	496
Bundaberg (C)	7	102	442	9	108	661	279	17	21
Burnett (S) — Parts A and B	10	63	675	501	32	1,271	277	106	27
Cooloola (S)	10	86	587	379	35	1,087	147	55	38
Hervey Bay (C)	25	170	1,770	355	111	2,406	601	29	87
Isis (S)	3	30	144	12	18	204	45	9	15
Maryborough (C)	9	61	289	181	36	567	165	21	24
Minam Vale (S)	6	26	227	74	30	357	32	51	22
Murgon (S)	3	10	83	114	10	217	5	2	5
Nanango (S)	5	58	123	54	11	246	30	1	10
Balance	17	85	440	402	35	962	113	16	41
<i>Wide Bay-Burnett (SD)</i>	95	691	4,780	2,081	426	7,978	1,694	307	290
Goondiwindi (T)	3	25	90	20	37	172	41	---	6
Inglewood (S)	5	17	105	29	8	159	18		7
Murilla (S)	4	20	84	50	2	156	26		7
Toowoomba (C)	5	64	264	46	26	400	182	---	19
Warwick (S)	5	35	134	164	30	363	34	3	10
Balance	22	164	568	506	44	1,282	155	14	44
<i>Darling Downs (SD)</i>	44	325	1,245	815	147	2,532	456	17	93
<i>South-West (SD)</i>	18	95	351	252	24	722	109	3	31

## AND STATISTICAL LOCAL AREAS, QUEENSLAND, SEPTEMBER QUARTER 1994

<i>Site nights occupied</i>				<i>Site occupancy rates (per cent)</i>				<i>Takings from accommodation (\$'000)</i>			
<i>July</i>	<i>Aug.</i>	<i>Sept</i>	<i>Sept. qtr</i>	<i>July</i>	<i>Aug.</i>	<i>Sept.</i>	<i>Sept. qtr</i>	<i>July</i>	<i>Aug.</i>	<i>Sept.</i>	<i>Sept. qtr</i>
9,076	8,835	8,868	26,779	68.6	66.7	69.2	68.2	64	65	62	191
13,568	13,650	13,318	40,536	76.5	77.0	77.6	77.0	156	155	152	463
15,971	16,374	16,168	48,513	71.3	73.1	74.5	72.9	171	172	179	522
52,504	52,567	50,675	155,746	73.8	73.9	73.6	73.7	488	491	506	1,484
82,043	82,591	80,167	244,795	73.7	74.2	74.4	74.1	815	817	837	2,469
12,014	12,570	12,476	37,060	74.0	77.4	79.4	76.9	115	114	127	356
9,892	10,165	9,796	29,853	74.0	76.1	75.8	75.3	83	89	85	257
28,514	28,119	27,764	84,397	79.8	78.7	80.3	79.6	241	239	247	728
10,651	10,557	10,552	31,760	74.7	74.0	76.5	75.0	89	88	88	265
16,229	16,615	18,623	51,467	33.2	34.0	39.4	35.5	129	130	157	416
11,528	11,459	11,163	34,150	85.9	85.4	85.9	85.7	98	101	107	306
179,947	180,911	179,403	540,261	67.5	67.9	69.6	68.3	1,634	1,643	1,709	4,987
26,747	26,890	26,864	80,501	75.3	75.7	78.1	76.4	294	292	299	885
22,930	23,066	23,144	69,140	74.0	74.5	77.2	75.2	204	206	221	631
29,394	30,069	28,899	88,362	66.8	68.3	67.8	67.6	332	322	326	980
1,799	1,764	1,629	5,192	18.0	17.7	16.9	17.5	17	19	15	51
12,780	12,773	12,725	38,278	57.9	57.9	59.6	58.4	189	170	201	559
62,500	64,706	56,501	183,707	77.1	79.8	72.0	76.4	736	707	651	2,094
75,280	77,479	69,226	221,985	73.0	75.1	69.4	72.5	925	877	852	2,653
58,093	58,117	52,683	168,893	71.3	71.3	66.8	69.9	618	620	627	1,866
14,555	15,059	17,750	47,364	29.1	30.1	36.7	31.9	174	172	215	561
14,397	13,933	14,680	43,010	32.4	31.4	34.1	32.6	139	121	145	405
243,195	246,377	234,875	724,447	60.9	61.7	60.8	61.1	2,702	2,629	2,701	8,031
16,328	14,911	13,127	44,366	79.7	72.8	66.2	73.0	152	134	113	400
17,398	16,752	15,325	49,475	44.2	42.5	40.2	42.3	135	131	101	368
10,975	10,951	12,102	34,028	32.6	32.5	37.1	34.0	97	107	109	314
48,530	47,283	40,902	136,715	65.1	63.4	56.7	61.8	537	503	514	1,554
4,741	4,974	4,354	14,069	75.0	78.7	71.1	75.0	57	56	52	165
7,225	7,680	7,692	22,597	41.1	43.7	45.2	43.3	68	70	77	214
5,139	5,177	6,070	16,386	46.4	46.8	56.7	49.9	63	62	75	200
290	404	422	1,116	4.3	6.0	6.5	5.6	2	3	3	9
1,523	1,707	1,611	4,841	20.0	22.4	21.8	21.4	12	15	15	42
6,989	6,872	6,803	20,664	23.4	23.0	23.6	23.3	72	65	74	211
119,138	116,711	108,408	344,257	48.2	47.2	45.3	46.9	1,196	1,147	1,135	3,478
2,307	2,166	2,105	6,578	43.3	40.6	40.8	41.6	29	28	26	84
733	725	678	2,136	14.9	14.7	14.2	14.6	5	5	5	14
1,102	1,359	1,192	3,653	22.8	28.1	25.5	25.5	8	11	8	27
8,354	8,019	8,784	25,157	67.4	64.7	73.2	68.4	86	81	99	266
2,310	2,214	2,209	6,733	20.5	19.7	20.3	20.2	27	25	27	80
7,328	7,854	7,477	22,659	18.4	19.8	19.6	19.3	66	71	68	205
22,134	22,337	22,445	66,916	28.2	28.5	29.7	28.8	222	220	234	676
7,958	6,925	6,211	21,094	35.6	30.9	28.7	31.8	82	72	62	216

TABLE 11 — CARAVAN PARKS: STATISTICAL DIVISIONS AND SELECTED SUBDIVISIONS

Statistical Divisions and Selected Subdivisions and Statistical Local Areas	Capacity					Total	Sites occupied by long-term guests	Other sites permanently reserved	Employment (persons)
	Establishments	On-site vans	Other powered sites	Unpowered sites	Cabins, flats, etc.				
Banana (S)	8	100	249	94	18	461	62	6	24
Calliope (S) — Parts A and B	9	62	512	181	26	781	201	8	25
Emerald (S)	15	103	513	110	84	810	209	8	55
Gladstone (C)	7	80	283	49	41	453	242	—	24
Livingstone (S)	11	48	480	301	65	894	188	33	38
Rockhampton (C)	7	108	540	105	134	887	255	6	54
Balance	15	99	474	154	21	748	143	14	41
<i>Fitzroy (SD)</i>	<i>72</i>	<i>600</i>	<i>3,051</i>	<i>994</i>	<i>389</i>	<i>5,034</i>	<i>1,300</i>	<i>75</i>	<i>261</i>
<i>Central-West (SD)</i>	<i>10</i>	<i>48</i>	<i>315</i>	<i>295</i>	<i>51</i>	<i>709</i>	<i>18</i>	<i>5</i>	<i>28</i>
Belyando (S)	4	13	341	25	13	392	127	—	9
Broadsound (S)	3	9	177	36	9	231	24	2	5
Mirani (S)	4	18	108	42	4	172	44	—	8
Mackay (C) — Parts A and B	16	179	886	230	138	1,433	404	4	66
Sarina (S)	7	51	189	60	13	313	78	4	16
Whitsunday (S)	13	107	596	282	116	1,101	128	74	59
<i>Mackay (SD)</i>	<i>47</i>	<i>377</i>	<i>2,297</i>	<i>675</i>	<i>293</i>	<i>3,642</i>	<i>805</i>	<i>84</i>	<i>163</i>
Bowen (S)	11	138	524	148	21	831	268	2	34
Burdekin (S)	8	32	264	149	32	477	147	2	23
Dalrymple (S)	5	11	102	39	25	177	13	—	13
Hinchinbrook (S)	6	20	276	110	19	425	34	9	21
Townsville (C)	10	156	728	197	95	1,176	484	2	56
Balance	5	30	236	98	42	406	157	6	20
<i>Northern (SD)</i>	<i>45</i>	<i>387</i>	<i>2,130</i>	<i>741</i>	<i>234</i>	<i>3,492</i>	<i>1,103</i>	<i>21</i>	<i>167</i>
Atherton (S) and Eacham (S)	9	50	305	304	68	727	132	26	30
Cairns (C)	4	59	369	131	101	660	273	—	33
Cardwell (S)	12	102	409	228	71	810	104	20	51
Douglas (S)	11	43	473	240	74	830	122	2	58
Etheridge (S)	3	7	69	45	10	131	4	—	7
Herberton (S)	5	13	101	160	18	292	25	—	17
Johnstone (S)	13	88	456	297	48	889	140	3	37
Marceba (S)	9	76	229	113	40	458	117	3	20
Mulgrave (S) — Parts A and B	19	238	977	270	203	1,688	473	10	81
Balance	7	28	188	372	19	607	53	—	22
<i>Far North (SD)</i>	<i>92</i>	<i>704</i>	<i>3,576</i>	<i>2,160</i>	<i>652</i>	<i>7,092</i>	<i>1,443</i>	<i>64</i>	<i>356</i>
Carpentaria (S)	4	10	229	122	26	387	31	1	10
McKinlay (S)	4	6	83	165	4	258	2	—	11
Mount Isa (C)	10	63	596	140	28	827	316	—	26
Balance	8	23	200	181	9	413	32	—	26
<i>North-West (SD)</i>	<i>26</i>	<i>102</i>	<i>1,108</i>	<i>608</i>	<i>67</i>	<i>1,885</i>	<i>381</i>	<i>1</i>	<i>73</i>
<i>Queensland</i>									
Short-term parks	239	1,053	10,738	7,895	1,303	20,989	1,812	850	896
Long-term parks	393	4,745	21,436	5,040	2,359	33,580	14,886	513	1,373
Total	632	5,798	32,174	12,935	3,662	54,569	16,698	1,363	2,269
Albert (S) (a)	13	225	1,186	128	34	1,573	993	10	61
Beaudesert (S) (a)	5	28	185	141	49	403	151	—	30
Caboolture (S) (a)	13	203	1,193	68	59	1,523	854	149	53
Sunshine Coast Statistical District (b)	36	229	2,805	998	307	4,339	1,099	258	189

(a) Albert, Beaudesert and Caboolture Shires straddle the boundary line between Brisbane and Moreton Statistical Divisions. (b) Sunshine Coast Statistical District comprises the more urban coastal portions of Caloundra City and Maroochy and Noosa Shires.

AND STATISTICAL LOCAL AREAS, QUEENSLAND, SEPTEMBER QUARTER 1994 - *continued*

<i>Site nights occupied</i>				<i>Site occupancy rates (per cent)</i>				<i>Takings from accommodation (\$ '000)</i>			
<i>July</i>	<i>Aug.</i>	<i>Sept.</i>	<i>Sept. qtr</i>	<i>July</i>	<i>Aug.</i>	<i>Sept.</i>	<i>Sept. qtr</i>	<i>July</i>	<i>Aug.</i>	<i>Sept.</i>	<i>Sept. qtr</i>
3,534	3,250	2,416	9,200	24.7	22.7	17.5	21.7	34	33	26	93
9,826	8,970	9,216	28,012	40.6	37.0	39.3	39.0	89	93	86	268
15,291	15,199	12,564	43,054	60.9	60.5	51.7	57.8	140	132	116	388
11,018	10,618	10,573	32,209	78.5	75.6	77.8	77.3	104	99	99	303
17,525	17,140	13,337	48,002	63.2	61.8	49.7	58.4	190	178	162	531
17,206	16,109	13,207	46,522	62.6	58.6	49.6	57.0	230	209	181	619
6,058	6,246	5,981	18,285	26.1	26.9	26.7	26.6	46	47	45	138
<b>80,458</b>	<b>77,532</b>	<b>67,294</b>	<b>225,284</b>	<b>51.6</b>	<b>49.7</b>	<b>44.6</b>	<b>48.6</b>	<b>832</b>	<b>791</b>	<b>716</b>	<b>2,339</b>
<b>8,058</b>	<b>6,489</b>	<b>4,712</b>	<b>19,259</b>	<b>36.7</b>	<b>29.5</b>	<b>22.2</b>	<b>29.5</b>	<b>133</b>	<b>107</b>	<b>85</b>	<b>325</b>
4,239	4,294	3,988	12,521	34.9	35.3	33.9	34.7	29	31	30	90
1,288	1,276	1,159	3,723	18.0	17.8	16.7	17.5	19	15	15	48
1,794	1,883	1,712	5,389	33.6	35.3	33.2	34.1	12	14	12	37
25,045	24,026	21,451	70,522	56.4	54.1	49.9	53.5	295	280	245	820
4,608	4,539	3,974	13,121	47.5	46.8	42.3	45.6	50	48	43	142
17,862	17,690	15,075	50,627	52.3	51.8	45.6	50.0	258	245	254	756
<b>54,836</b>	<b>53,708</b>	<b>47,359</b>	<b>155,903</b>	<b>48.6</b>	<b>47.6</b>	<b>43.3</b>	<b>46.5</b>	<b>663</b>	<b>632</b>	<b>597</b>	<b>1,893</b>
15,896	15,720	13,295	44,911	61.7	61.0	53.3	58.7	177	167	132	476
7,612	7,586	6,162	21,360	51.5	56.0	47.0	51.5	64	69	50	183
963	948	1,006	2,917	17.6	17.3	18.9	17.9	11	10	11	32
7,502	6,767	5,160	19,429	56.9	51.4	40.5	49.7	66	58	43	167
26,177	27,408	22,732	76,317	71.8	75.2	64.4	70.5	366	368	313	1,046
6,085	6,095	5,624	17,804	48.3	48.4	46.2	47.7	70	68	59	197
<b>64,235</b>	<b>64,524</b>	<b>53,979</b>	<b>182,738</b>	<b>59.3</b>	<b>60.3</b>	<b>52.1</b>	<b>57.3</b>	<b>754</b>	<b>740</b>	<b>608</b>	<b>2,102</b>
7,783	7,205	6,555	21,543	34.5	32.0	30.1	32.2	93	81	78	253
16,103	13,962	12,552	42,617	78.7	68.2	63.4	70.2	227	186	156	569
12,104	12,652	9,634	34,390	48.2	50.4	39.6	46.1	164	155	125	444
13,156	14,069	10,954	38,179	51.1	54.7	44.0	50.0	279	277	197	753
1,146	941	424	2,511	28.2	23.2	10.8	20.8	18	13	6	37
1,233	1,220	1,046	3,499	13.6	13.5	11.9	13.0	11	12	9	33
11,882	12,415	10,198	34,495	43.1	45.0	38.2	42.2	126	132	104	362
6,840	7,085	6,494	20,419	48.2	49.9	47.3	48.5	82	79	68	228
38,517	38,267	30,881	107,665	73.6	73.1	61.0	69.3	547	551	450	1,548
10,519	9,657	7,172	27,348	55.9	51.3	39.4	49.0	98	87	68	253
<b>119,283</b>	<b>117,473</b>	<b>95,910</b>	<b>332,666</b>	<b>54.3</b>	<b>53.4</b>	<b>45.1</b>	<b>51.0</b>	<b>1,645</b>	<b>1,572</b>	<b>1,262</b>	<b>4,479</b>
6,849	6,034	2,359	15,242	57.1	50.3	20.3	42.8	65	58	23	146
841	725	434	2,000	10.5	9.1	5.6	8.4	9	7	4	19
16,477	16,153	13,209	45,839	64.3	63.0	53.2	60.2	198	200	154	553
4,639	3,553	2,032	10,224	36.2	27.8	16.4	26.9	66	58	36	160
<b>28,806</b>	<b>26,465</b>	<b>18,034</b>	<b>73,305</b>	<b>49.3</b>	<b>45.3</b>	<b>31.9</b>	<b>42.3</b>	<b>338</b>	<b>322</b>	<b>218</b>	<b>878</b>
313,216	305,787	259,824	878,827	48.1	47.1	41.4	45.6	3,942	3,677	3,393	11,012
614,832	613,665	578,806	1,807,303	59.1	59.0	57.5	58.5	6,260	6,198	5,935	18,393
<b>928,048</b>	<b>919,452</b>	<b>838,630</b>	<b>2,686,130</b>	<b>54.9</b>	<b>54.4</b>	<b>51.3</b>	<b>53.5</b>	<b>10,202</b>	<b>9,875</b>	<b>9,327</b>	<b>29,404</b>
35,823	35,725	35,732	107,280	73.5	73.3	75.7	74.1	357	357	362	1,076
6,515	6,042	6,502	19,059	52.1	48.4	53.8	51.4	75	65	79	219
34,944	35,636	35,620	106,200	74.0	75.5	78.0	75.8	319	320	348	987
<b>88,671</b>	<b>89,763</b>	<b>84,468</b>	<b>262,902</b>	<b>65.9</b>	<b>66.7</b>	<b>64.9</b>	<b>65.9</b>	<b>985</b>	<b>971</b>	<b>1,013</b>	<b>2,969</b>

TABLE 12 — VISITOR HOSTELS BY STATISTICAL DIVISION, QUEENSLAND

Particulars	Brisbane (SD)	Moreton (SD)	Wide Bay- Burnett (SD)	Mackay (SD)	Northern (SD)	Far North (SD)	Balance of State	Queensland
ESTABLISHMENTS, CAPACITY AND EMPLOYMENT								
<i>September quarter 1993—</i>								
Establishments	14	18	8	13	17	39	12	121
Bed spaces	658	1,046	387	852	1,231	3,374	452	8,000
Employment (persons)	32	58	32	84	76	244	26	552
<i>September quarter 1994</i>								
Establishments	17	15	10	12	17	36	9	116
Bed spaces	841	963	539	891	1,245	2,926	386	7,791
Employment (persons)	62	54	36	86	70	227	19	554
GUEST NIGHTS								
<i>September quarter 1993</i>	33,066	37,184	23,322	37,301	58,579	187,724	22,881	400,057
<i>1994—</i>								
July	13,078	13,854	10,633	13,288	21,393	58,978	4,127	135,351
August	13,976	12,101	9,642	12,637	20,426	54,782	4,027	127,591
September	13,777	14,066	10,173	12,674	17,829	45,026	4,019	117,564
<i>September quarter 1994</i>	40,831	40,021	30,448	38,599	59,648	158,786	12,173	380,506
BED OCCUPANCY RATES (per cent)								
<i>September quarter 1993</i>	54.6	38.6	65.5	48.2	51.7	60.5	55.0	54.4
<i>1994—</i>								
July	50.2	46.4	63.6	48.1	55.4	65.0	34.5	56.0
August	53.6	40.5	57.7	45.8	52.9	60.4	33.7	52.8
September	54.6	48.7	62.9	47.4	47.7	51.3	34.7	50.3
<i>September quarter 1994</i>	52.8	45.2	61.4	47.1	52.1	59.0	34.3	53.1
GUEST ARRIVALS								
<i>September quarter 1993</i>	13,646	14,690	9,128	15,061	24,248	70,779	8,575	156,127
<i>1994—</i>								
July	5,529	5,618	2,922	6,036	7,690	20,021	2,795	50,611
August	4,732	4,872	2,713	5,447	6,764	18,487	2,685	45,700
September	4,757	5,596	3,443	5,532	5,933	14,474	2,540	42,275
<i>September quarter 1994</i>	15,018	16,086	9,078	17,015	20,387	52,982	8,020	138,586
AVERAGE LENGTH OF STAY (days)								
<i>September quarter 1993</i>	2.4	2.5	2.6	2.5	2.4	2.7	2.7	2.6
<i>1994—</i>								
July	2.4	2.5	3.6	2.2	2.8	2.9	1.5	2.7
August	3.0	2.5	3.6	2.3	3.0	3.0	1.5	2.8
September	2.9	2.5	3.0	2.3	3.0	3.1	1.6	2.8
<i>September quarter 1994</i>	2.7	2.5	3.4	2.3	2.9	3.0	1.5	2.7
TAKINGS FROM ACCOMMODATION (\$'000)								
<i>September quarter 1993</i>	371	426	231	407	578	2,278	251	4,542
<i>1994—</i>								
July	155	171	110	156	208	744	49	1,593
August	164	160	99	150	213	712	48	1,547
September	162	180	106	152	177	589	47	1,413
<i>September quarter 1994</i>	482	511	315	459	598	2,045	144	4,554

## EXPLANATORY NOTES

- \*\*\*\*\*
- INTRODUCTION**                    1    This publication contains data for Queensland from a quarterly survey of tourist accommodation establishments. The period covered by the latest survey is the 3 months ended 30 September 1994.
- SCOPE**                                2    Tourist accommodation establishments currently included in the survey comprise two groups:
- Establishments which provide predominantly short-term accommodation (i.e. for periods of less than 2 months) to the general public. These include:
    - Hotels, motels and guest houses, with facilities* being hotels licensed to operate a public bar and motels, private hotels and guest houses, all of which provide a bath (or shower) and toilet in most guest rooms and have breakfast available for guests.
    - NOTE: From December quarter 1993, hotel, motel and guest house establishments with fewer than five rooms have been formally excluded from the scope of this statistical collection. This change in scope resulted in the exclusion of 21 establishments which in the September quarter 1993 Survey aggregates represented 1.9 per cent of hotel, motel and guest house establishments but accounted for only 0.2 per cent of accommodation capacity and less than 0.1 percent of occupancy and takings.
    - Holiday flats, units and houses* (excluding establishments predominantly operated on a time share basis) which are operated by owners or managers who have sole letting rights to at least five flats, units or houses or by real estate agents for short-term letting. They are mainly self-contained in terms of cooking, bath (or shower) and toilet facilities and do not have breakfast available for guests. Data for holiday flats, units and houses include short-term owner occupation as well as paying guest occupation.
    - Visitor hostels* which provide accommodation to visitors on a bed basis (rather than by the room). This category does not include establishments providing charity type accommodation (e.g. Salvation Army hostels) nor hotels, motels and guest houses without in-room facilities which provide accommodation on a per room basis.
  - *Caravan parks* providing either predominantly short-term (i.e. for periods of less than 2 months) or predominantly long-term (i.e. for periods of 2 months or more) accommodation to the general public and which provide powered sites for caravans and toilet, shower and laundry facilities for guests.
- 3    Data collected and published for each type of establishment (other than holiday flats, units and houses) include both long-term and short-term guests at these establishments.
- 4    Establishments providing more than one type of accommodation (e.g. a motel with attached caravan park) are treated as two or more separate establishments. However, self-contained units, flats, cabins, etc. attached to hotels, motels or to caravan parks are included in the capacity for those establishments and not treated as separate holiday flat, unit or house establishments.
- DEFINITIONS**
- 5    *Number of establishments.* For hotels, motels and guest houses, caravan parks and visitor hostels, the number of establishments within the scope of the survey which operated for any part of the survey period, or which closed temporarily for the quarter for seasonal reasons.
- 6    *Number of letting entities.* For holiday flats, units and houses, the number of owners, managers or real estate agents within the scope of the survey who operated for any part of the survey period.
- 7    Capacity in terms of *Guest rooms, Bed spaces, Holiday units or Caravan park sites, etc.* is the maximum number available to accommodate paying guests during the survey period. Capacity closed temporarily for seasonal reasons is included.
- 8    *Bed spaces.* Three-quarter beds are counted as one bed space; double beds as two bed spaces. Cots are excluded.
- 9    *Total caravan park capacity* comprises *On-site vans, Other powered sites, Unpowered sites and Cabins, etc.*
- \*\*\*\*\*

## EXPLANATORY NOTES—continued

\*\*\*\*\*

### DEFINITIONS—continued

**10** *Room nights available.* The number of guest rooms available multiplied by the number of days for which they were available during the survey period. Includes operating periods only for establishments closing (other than for seasonal reasons) or opening during the survey period.

**11** Occupancy in terms of *Room nights*, *Unit nights* or *Site nights occupied* refers to the total number of nights each guest room, holiday unit or caravan park site, etc. was occupied during the survey period.

NOTE: From September quarter 1992, caravan park sites, etc. permanently reserved for 2 months or more at the end of the survey period but only casually occupied by their tenants have been recorded continuously as *Site nights occupied* irrespective of whether the tenants of individual sites were in residence on any particular night. (See also paragraph 14 below). Previously, usage of these sites was recorded as *Site nights occupied* only when their tenants were in the park. Total site occupancy rates from September quarter 1992 are therefore not comparable with those from previous quarters.

**12** Occupancy in terms of *Guest nights* refers to the total number of nights each paying guest stayed during the survey period.

**13** *Sites occupied by long-term guests.* The total number of sites, etc. occupied at the end of the survey period by guests who have stayed continuously for 2 months or more.

**14** *Other sites permanently reserved.* The total number of powered and unpowered sites, on-site vans and cabins, etc. continuously let for 2 months or more by the end of the survey period to tenants who occupy the sites only on a casual or sporadic basis. Separate data for this item are available only from September quarter 1992.

**15** *Occupancy rates* represent occupancy expressed as a percentage of total capacity available during the survey period e.g.

*Room occupancy rate (%) for the period =*

$$\frac{\text{Room nights occupied}}{(\text{Guest rooms}) \times (\text{No. of days in the period})} \times 100$$

providing that, for establishments closing (other than for seasonal reasons) or opening during the period, the denominator of the above expression includes only operating periods.

**16** *Guest arrivals.* The total number of paying guests counted only on the first night they stayed at the accommodation establishment.

**17** *Unit lettings.* The total number of times a holiday flat, unit or house was occupied by a new tenant, counted only on the first night it was occupied by the new tenant.

**18** *Average length of stay* is expressed in number of days and is calculated:

- for hotels, motels and guest houses and for visitor hostels, by dividing *Guest nights* by *Guest arrivals* and
- for holiday flats, units and houses, by dividing *Unit nights occupied* by *Unit lettings*.

**19** *Takings from accommodation.* Revenue received from the provision of accommodation. Takings from meals are excluded. Takings from accommodation for each month generally represent the takings received during that month. Where payments are received in advance of, or after, the provision of accommodation to guests, the monthly figure for takings from accommodation may not necessarily bear a direct relationship to the number of guests accommodated during the month. Rental and storage fees paid to caravan parks for the keeping of private vans in parks are included in the takings of the month they are received.

**20** *Star grading.* The grading of hotels and motels with facilities based on the classification system used by members of the Australian Automobile Association (AAA). The gradings are allocated according to a points system based on the amenities and facilities available to guests. Details of the grading scheme are contained in the RACV-RAASA members' publication *Accommodation Australia*, or the individual tour guides produced by members of the AAA. For the purpose of classifying establishments to a star grading in this publication, 'half' star gradings are ignored (e.g. a two and a half star grading has been shown as two star).

\*\*\*\*\*



## EXPLANATORY NOTES - continued

*****	
AUSTRALIAN STANDARD GEOGRAPHICAL CLASSIFICATION	<p><b>21</b> <i>Employment.</i> The number of persons working at accommodation establishments at the end of the survey period (including working proprietors and those working on other than accommodation activities).</p> <p><b>22.</b> Statistics presented in this publication have been classified according to the Australian Standard Geographical Classification (ASGC), Edition 2.4. This classification incorporates a number of hierarchic structures of geographic areas. The appropriate spatial units of the main structure of the ASGC used in this publication are defined as follows.</p> <p><i>Statistical Local Areas (SLAs)</i> are the smallest types of spatial units in the ASGC for which tourist accommodation data are presented. They correspond either to legal local government areas (LGAs) as defined under the <i>Local Government Act 1936</i> or to suburbs in certain urban LGAs. Some LGAs are split into two or more parts, with each part forming a separate SLA. In all instances, LGA data can be derived by aggregating SLAs. The unincorporated area of Queensland also forms a SLA. In aggregate, SLAs cover the whole of the State without gaps or overlaps.</p> <p><i>Statistical Subdivisions (SSDs)</i> consist of one or more SLAs and form the intermediate size spatial unit for the presentation of regional data.</p> <p><i>Statistical Divisions (SDs)</i>, which consist of one or more SSDs, are designed to be relatively homogeneous regions characterised by identifiable social and economic units within the region, under the unifying influence of one or more major towns or cities. The Brisbane Statistical Division comprises the Cities of Brisbane, Ipswich, Logan and Redcliffe, the Shires of Pine Rivers and Redland and parts of the Shires of Albert, Beaudesert, Caboolture, and Moreton.</p> <p><i>Statistical districts</i> have been defined around selected urban areas to provide comparable statistics over a period of time. These districts, which are intended to contain the anticipated urban spread for at least 20 years, are generally defined as having a population of 25,000 or more and experiencing urban growth beyond the LGA boundaries.</p> <p>NOTE: In accordance with ASGC Edition 2.4, as applicable from 1 July 1994, recent changes in LGAs in Queensland have been reflected in Tables 7, 9 and 11 in this publication (and in related time series tabulations - see pages 33, 34) as follows:</p> <ul style="list-style-type: none"> <li>• amalgamation of Gympie (C) and Widgee (S) to form Cooloola (S);</li> <li>• transfer of part of Woocoo (S) to Maryborough (C);</li> <li>• enlargement of Bundaberg (C) by the addition of parts of Gooburrum (S) and Woongarra (S); and amalgamation of the remaining (major) parts of Gooburrum (S) and Woongarra (S) to form Burnett (S);</li> <li>• amalgamation of Allora (S), Glengallan (S), Rosenthal (S) and Warwick (C) to form Warwick (S);</li> <li>• enlargement of Mackay (C) by the addition of Pioneer (S);</li> <li>• boundary changes in Burdekin (S), Dalrymple (S), Hinchinbrook (S), Thuringowa (C) and Townsville (C).</li> </ul> <p>For more detailed information, refer to the ASGC (1216.0).</p>
UNPUBLISHED STATISTICS	<p><b>23</b> The ABS may make available on request certain unpublished tourist accommodation statistics. In particular, small geographical area and other tabulations are available for various accommodation types in a time series format. A charge may be made for this information.</p>
RELATED PUBLICATIONS	<p><b>24</b> Publications for Australia and each State and Territory are released by the respective offices of the ABS. Tourist accommodation statistics for past quarters are available on request. Other ABS publications which may be of interest include:</p> <p style="padding-left: 40px;"><i>Directory of Tourism Statistics</i> (1130.0) (irregular; first and latest issue: 1991)</p> <p style="padding-left: 40px;"><i>Overseas Arrivals and Departures, Australia</i> (3401.0) (monthly)</p> <p style="padding-left: 40px;"><i>Tourism Indicators Australia</i> (8634.0) (quarterly)</p> <p style="padding-left: 40px;"><i>Tourist Accommodation, Australia</i> (8635.0) (quarterly)</p> <p><b>25</b> Current publications produced by the ABS are listed in the <i>Catalogue of Publications and Products</i> (1101.0). The ABS also issues the <i>Publications Advice</i> (1105.0) on Tuesdays and Fridays which lists publications to be released in the next few days. Both the <i>Catalogue</i> and <i>Publications Advice</i> are available from any ABS office.</p>

**EXPLANATORY NOTES**—*continued*

\*\*\*\*\*

SYMBOLS AND  
OTHER USAGES

n.p.	not available for publication but included in totals where applicable
..	not applicable
—	nil or rounded to zero
(C)	City
(S)	Shire
(T)	Town

**26** Where figures have been rounded, discrepancies may occur between totals and the sums of the component items.

313 Adelaide Street  
**BRISBANE Q 4000**  
 19 December 1994

**R. A. CROCKETT**  
 Deputy Commonwealth Statistician

\* TOURIST ACCOMMODATION, QUEENSLAND: TIME SERIES STATISTICS AVAILABLE

*****									
Brisbane Statistical Division	HM	HU	CP	VH	Darling Downs Statistical Division	HM	CP	VII	
Albert (S) Part A (a)			CP		Chinchilla (S)	HM			
Brisbane City (SSD)	HM	HU	CP		Dalby (T)	HM			
Brisbane City (SSD)			Hotels		Goondiwindi (T)	HM	CP		
Brisbane City (SSD)			Motels		Inglewood (S)	HM	CP		
Ascot	HM				Jondaryan (S)	HM			
Aspley	HM		CP		Murilla (S)	HM	CP		
Brisbane City Core (b)	HM	HU			Stanthorpe (S)	HM	CP		
City - Inner	HM				Taroom (S)	HM			
City - Remainder	HM				Toowoomba (C)	HM	CP		
Kangaroo Point	HM				Warwick (S)(c)	HM	CP		
Spring Hill	HM	HU							
Brisbane City Core (b)					South-West Statistical Division	HM	CP		
establishments with more than 50 rooms	HM				Balonne (S)	HM			
Brisbane City Core (b)			Hotels		Murweh (S)	HM	CP		
Brisbane City Core (b)			Motels		Paroo (S)	HM			
Eight Mile Plains				CP	Roma (T)	HM	CP		
Hamilton	HM								
Caboolture (S) Part A (a)			CP		Fitzroy Statistical Division	HM	HU	CP	
Ipswich (C)	HM		CP		Banana (S)		CP		
Logan City (SSD)	HM		CP		Banana (S), Fitzroy (S) and Mt Morgan (S)	HM			
Redcliffe City (SSD)	HM		CP		Bauhinia (S)	HM			
Redland Shire (SSD)	HM		CP		Calliope (S) - Parts A and B	HM	CP		
North Stradbroke and Coochiemudlo Islands		HU			Duaringa (S)	HM			
					Emerald (S)	HM	CP		
Moreton Statistical Division	HM	HU	CP	VH	Gladstone (C)	HM	CP		
Albert (S) - Part B (a)			CP		Livingstone (S)	HM	CP		
Boonah (S)	HM				Rockhampton (C)	HM	CP		
Caboolture (S) - Part B (a)			CP		Rockhampton (C)		Hotels		
Caloundra (C) - Parts A and B	HM	HU	CP		Rockhampton (C)		Motels		
Esk (S)	HM		CP						
Gatton (S)			CP		Central-West Statistical Division	HM	CP		
Gold Coast City (SSD)	HM	HU	CP	VH	Barcardine (S)	HM			
Gold Coast City (SSD)			Hotels		Longreach (S)	HM			
Gold Coast City (SSD)			Motels						
Biggera Waters		HU			Mackay Statistical Division	HM	HU	CP	VH
Bilinga	HM				Belyando (S)	HM			
Broadbeach		HU			Broadsound (S)		CP		
Burleigh Heads	HM	HU			Mackay (C) - Parts A and B (c)	HM	CP		
Coolangatta	HM	HU			Mirani (S)		CP		
Coombah			CP		Sarina (S)	HM	CP		
Currumbin		HU			Whitsunday (S)	HM	HU	CP	VH
Labrador	HM	HU	CP						
Main Beach-Broadwater		HU			Northern Statistical Division	HM	HU	CP	VII
Mermaid Beach	HM	HU			Bowen (S)	HM	CP		
Miami	HM	HU			Burdekin (S) (c)	HM	CP		
Palm Beach	HM	HU			Charters Towers (C)	HM			
Southport	HM				Dalrymple (S) (c)		CP		
Surfers Paradise	HM	HU			Hinchinbrook (S) (c)		CP		
Tugun		HU			Townsville (C) - Parts A and B (c)	HM	HU	CP	
Gold Coast City (SSD) by establishment size					City	HM			
(number of rooms) - 1-9, 10-15,					Hermit Park	HM			
16-25, 26-50, 51-100, 101 & over	HM				Magnetic Island		HU	VII	
Maroochy (S) - Parts A and B	HM	HU	CP		North Ward-Castle Hill	HM	HU		
Noosa (S) - Parts A and B	HM	HU	CP		Rosslea	HM			
Wide Bay-Burnett Statistical Division	HM	HU	CP	VH					
Bundaberg (C) (c)	HM		CP						
Burnett (S) - Parts A and B (c)	HM	HU	CP						
Cooloola (S) (c)	HM		CP						
Hervey Bay (C)	HM	HU	CP						
Isis (S)	HM		CP						
Kingaroy (S)	HM								
Kolan (S)	HM								
Maryborough (C)	HM		CP						
Miriam Vale (S)	HM		CP						
Nanango (S)	HM		CP						

**TOURIST ACCOMMODATION, QUEENSLAND: TIME SERIES STATISTICS AVAILABLE—continued**

\*\*\*\*\*

Far North Statistical Division	HM	HU	CP	VH	Other geographic aggregations		
Atherton (S)	HM				Albert (S) (a)	HM	CP
Atherton (S), Cardwell (S), Douglas (S), Eacham (S), Johnstone (S) and Mulgrave (S)	HM				Beaudesert (S) (a)	HM	CP
Atherton (S) and Eacham (S)	HM		CP		Caboolture (S) (a)	HM	CP
Atherton (S), Eacham (S), Herberton (S) and Mareeba (S)	Hotels				Sunshine Coast Statistical District (d)	HM	HU CP
Atherton (S), Eacham (S), Herberton (S) and Mareeba (S)	Motels				Sunshine Coast Statistical District (d)	Hotels	
Cairns (C)	HM	HU	CP	VII	Sunshine Coast Statistical District (d)	Motels	
Cairns (C)	Hotels				Great Barrier Reef islands (e)	HM	
Cairns (C)	Motels				Mackay (C) and Whitsunday (S) (c)	HM	
Cardwell (S)	HM		CP		Balance	HM	
Douglas (S)	HM	HU	CP	VII	Queensland regions by star grading		
Eacham (S)	HM				Brisbane City (SSD)		
Etheridge (S)			CP		1-2 and ungraded, 3, 4-5	HM	
Herberton (S)	HM		CP		Brisbane Statistical Division		
Johnstone (S)	HM		CP		1 2, 3, 4 5, Ungraded	HM	
Mareeba (S)	HM		CP		Gold Coast City (SSD)		
Mulgrave (S) - Parts A and B	HM	HU	CP		1-2, 3, 4-5, Ungraded	HM	
Mulgrave (S) - Parts A and B	Hotels				Sunshine Coast Statistical District (d)		
Mulgrave (S) - Parts A and B	Motels				1-2, 3, 4-5, Ungraded	HM	
North-West Statistical Division	HM		CP		Bundaberg (C), Hervey Bay (C), Isis (S), Maryborough (C) and Burnett (S) (c)		
Carpentaria (S)	HM				1-2, 3-4, Ungraded	HM	
Cloncurry (S)	HM				Stanthorpe (S), Toowoomba (C) and Warwick (S) (c)		
Flinders (S)	HM				1 2, 3-4, Ungraded	HM	
Mount Isa (C)	HM		CP		Calliope (S) and Gladstone (C)		
					1 2, 3 4 & Ungraded	HM	
					Livingstone (S) and Rockhampton (C)		
					1-2, 3-4 & Ungraded	HM	
Total Queensland	HM	HU	CP	VII	Mackay (C) and Whitsunday (S) (c)		
By establishment size (number of rooms)					1 2, 3-5, Ungraded	HM	
1 9, 10-15, 16-25, 26-50, 51 100, 101 & over	HM				Townsville (C)		
By star grading					1-2 and ungraded, 3-5	HM	
1, 2, 3, 4, 5, Ungraded	HM				Atherton (S), Cardwell (S), Douglas (S), Eacham (S), Johnstone (S) and Mulgrave (S)		
Total Queensland	Hotels				1 2, 3, 4-5, Ungraded	HM	
Total Queensland	Motels				Cairns (C)		
					1-2, 3, 4-5, Ungraded	HM	

NOTE: Establishment type codes are used above to denote the following:

- HM - Licensed hotels, motels and guest houses with facilities
- Hotels - Licensed hotels with facilities
- Motels - Motels and guest houses with facilities
- HU - Holiday flats, units and houses
- CP - Caravan parks (total short-term and long-term)
- VH - Visitor hostels

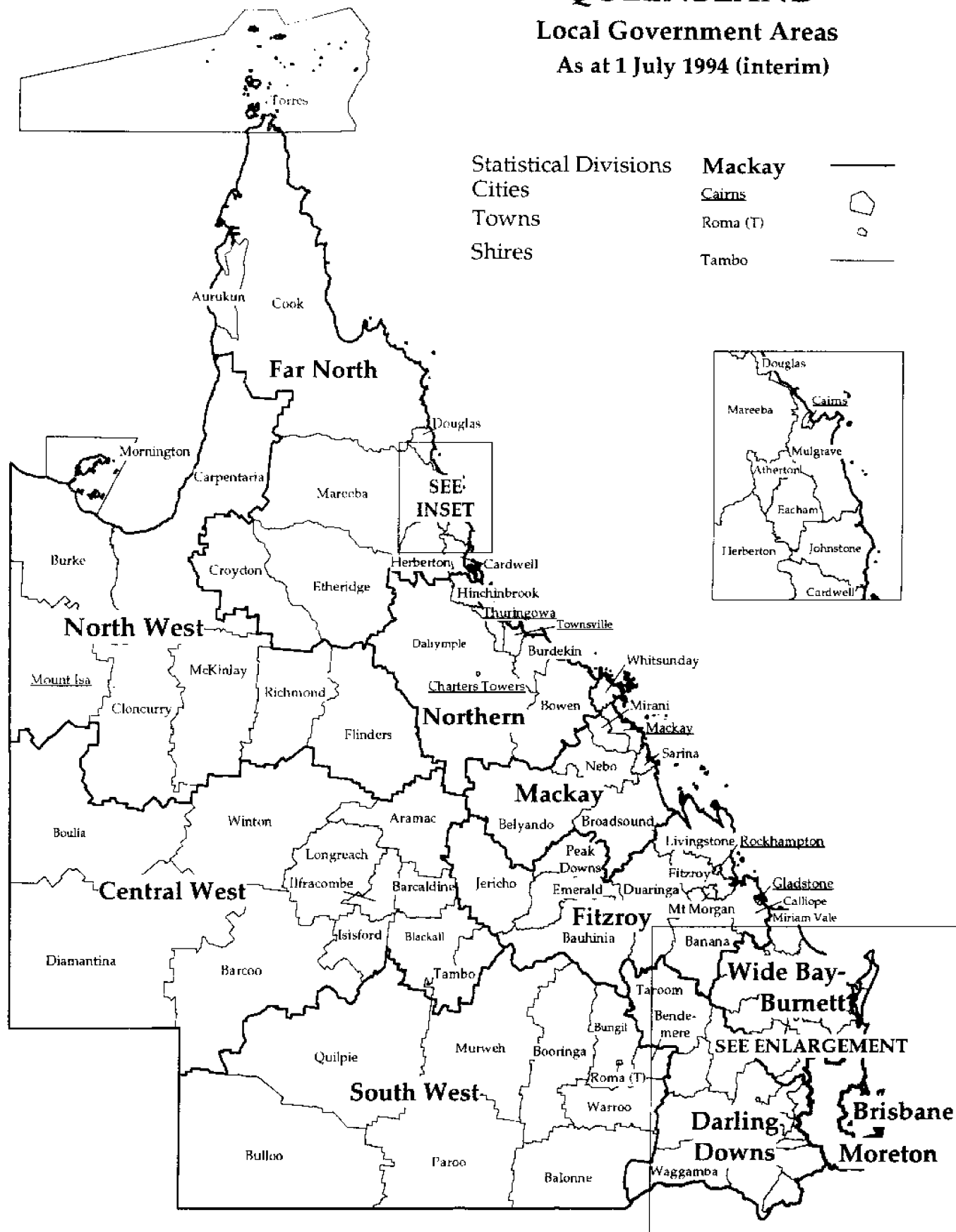
(a) Albert, Beaudesert, Caboolture and Moreton Shires straddle the boundary line between Brisbane and Moreton Statistical Divisions. (b) Brisbane City Core comprises the suburbs of Bowen Hills, City, Dutton Park, Fortitude Valley, Herston, Highgate Hill, Kangaroo Point, Kelvin Grove, Milton, New Farm, Newstead, Paddington, Red Hill, South Brisbane, Spring Hill, West End and Woollongabba. (c) See page 31, Explanatory Note 22 for details of boundary changes effective from 1 July 1994. (d) Sunshine Coast Statistical District comprises the more urban coastal portions of Caloundra City and Maroochy and Noosa Shires. (e) Great Barrier Reef island establishments are those on coastal islands from Lady Elliot in the south to Lizard in the north.





\*\*\*\*\*

# QUEENSLAND

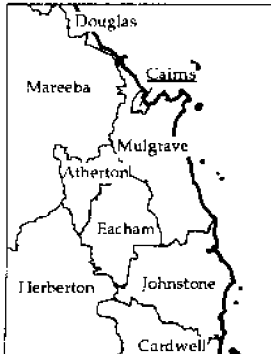
## Local Government Areas

As at 1 July 1994 (interim)

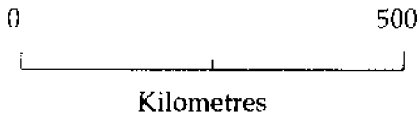


Statistical Divisions	Mackay	
Cities	Cairns	
Towns	Roma (T)	
Shires	Tambo	

SEE  
INSET



SEE ENLARGEMENT



# SOUTH-EASTERN QUEENSLAND

## Local Government Areas

As at 1 July 1994 (interim)

Statistical Divisions

Cities

Towns

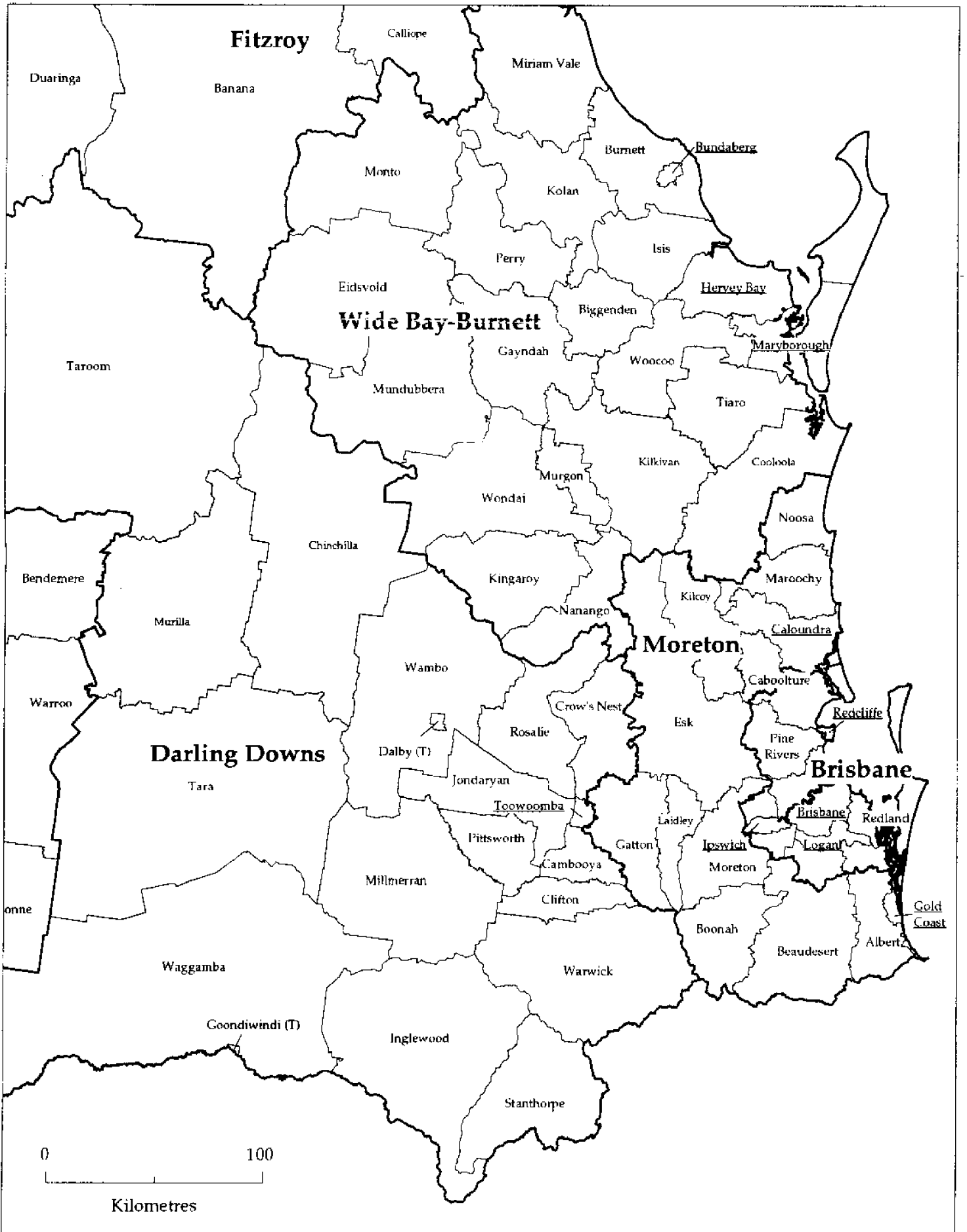
Shires

**Moreton**

Redcliffe

Dalby

Wondai







2863530009947  
ISSN 0725-394X